



MEMORANDUM | KERALA



Floods & Landslides 2019

MEMORANDUM

Kerala Floods – 2019

(1st August to 31st August 2019)



Submitted by

**State Relief Commissioner, Disaster Management
(Principal Secretary)**

Government of Kerala

Contents

1. Introduction	8
1.1. Monsoon Forecast and Preparedness	8
1.2. Floods & Landslides 2019.....	10
1.3. Immediate Response and Relief Operations	13
1.4. Monsoon Assessment.....	14
2. Assessment of Relief as per SDRF norms	18
2.1. Human Fatalities	18
2.2. Agriculture	19
2.3. Debris clearance from public land	22
2.4. Housing	22
2.5. Fisheries	24
2.6. Animal Husbandry.....	26
2.7. Power	28
2.8. Public Works Department.....	29
2.9. Irrigation and Water Sector	31
2.10. Gratuitous relief.....	32
2.11. Community Owned Assets.....	35
Abstract of Claims	39
ANNEXURES	42
ANNEXURE 1 Station wise monthly rainfall for the month of August 2019	43
Annexure 2 District wise Percentage Departure of Rainfall for the peak days (6 th August to 14 th August 2019).....	46
Annexure 3 District Wise list of affected villages due to floods & landslides of 2019	47
Annexure 4 Human Fatalities as on 31.08.2019	49
Annexure 5 Crop damage due to South West Monsoon as on 15.08.2019.....	50
Annexure 6 Agricultural losses in the districts due to South West Monsoon 2019	52
Annexure 7 Damages Assessment of Fisheries Sector- Boats and Nets	53
Annexure 8 Damage Assessment in Animal Husbandry Sector	54
Annexure 9 District wise list for provision of fodder/feed concentrate	56
Annexure 10 Damage Assessment in Power Sector	57
Annexure 11 Damage assessment of water supply structures	58

Annexure 12 | District wise peak number of camps and families 58
Annexure 13 | List of Villages affected by floods and landslide 59

List of Tables

Table 1 District wise departure of average rainfall.....	14
Table 2 District Wise Human Fatalities.....	18
Table 3 District wise list of people with grievous injury requiring hospitalization for less than a week .	18
Table 4 District Wise Agricultural Losses (SMF Only)	21
Table 5 District Wise Assistance for Land and other losses (Agriculture).....	21
Table 6 District wise assistance for debris clearance from public land.....	22
Table 7 District Wise House Damage – Pucca	23
Table 8 District wise house damage estimates – Partial (Flood hit and cleaned).....	24
Table 9 Damage to Fisheries sector - District Wise	25
Table 10 Fish farms - Input subsidy to fish seed farm	25
Table 11 District wise damages to Animals/Poultry and Sheds in Animal Husbandry	26
Table 12 Item wise assistance in Animal Husbandry	27
Table 13 District wise number of carcasses disposed	27
Table 14 District wise losses to Dairy Development Department.....	28
Table 15 Restoration Cost of Power Sector.....	29
Table 16 Cost incurred for restoration of roads.....	30
Table 17 Cost incurred for restoration of bridges.....	30
Table 18 Damage to Irrigation & Water Supply Sector	31
Table 19 Cost incurred for running relief camps.....	32
Table 20 Cost incurred for supply of drinking water to relief camps.....	33
Table 21 Gratuitous relief for families whose livelihood is seriously affected	33
Table 22 Cost of immediate assistance for loss of utensils and clothes	34
Table 23 Cost of Search and Rescue	35
Table 24 Cost incurred for repair and restoration of community owned drinking water structures.....	36
Table 25 Cost Incurred for immediate restoration of community owned infrastructure (Grama Panchayath, Block Panchayath & District Panchayth)	37
Table 26 Cost Incurred for immediate restoration of community owned infrastructure (Municipality)..	38
Table 27 Cost Incurred for immediate restoration of community owned infrastructure (Corporation) ...	38

List of Figures

Figure 1: Map of Notified flood/ Landslide Affected Villages.....	11
Figure 2: Map of Landslide Affected Villages	12
Figure 3: Rainfall Departure Map.....	16
Figure 4: Flood Inundation Map	17
Figure 5: Major Crops and Growing Areas	20

Abbreviations

ESFP	Emergency Support Functions Plan
GDP	Gross Domestic Product
IAG	Inter Agency Group
IMD	India Meteorological Department
IRS	Incident Response System
LRF	Long Range Forecast
LPA	Long Period Average
GSVA	Gross State Value Addition
KSDMA	Kerala State Disaster Management Authority
NDRF	National Disaster Response Force
NDRF	National Disaster Response Fund
PDNA	Post Disaster Needs Assessment
SEC	State Executive Committee
SDMA	State Disaster Management Authority
SDRF	State Disaster Relief Fund
SOP	Standard Operating Procedures
SMF	Small and Medium Farmers
SDMP	State Disaster Management Plan
RCC	Reinforced Cement Concrete
UN	United Nations

1. Introduction

Kerala, with a population of over 3.3 crore, is globally recognized for its commendable achievements with respect to Human Development. In India, Kerala ranks first among Indian states on the Human Development Index, however, Kerala is vulnerable to natural disasters and is categorized as a multi-hazard zone state. Kerala State Disaster Management Plan 2016 identifies 39 hazards specific to the state. Kerala is also one of the most densely populated states (860 persons per square kilometre)

Floods are the most common natural hazard in the state. Nearly 14.5% of the state's land area is prone to floods, at the same time, incidents of landslides are also at rise in the state. In the year 2018, Kerala witnessed worst floods where 450 lives were lost, 1260 villages were fully affected. The PDNA study led by UN suggested a recovery cost of Rs. 31,000 crores. The impact of the floods and landslides in the state has exposed underlying causes that need to be addressed immediately. Over the years the state has lost much of its green cover due to changes in land use patterns, building and road construction in the hills which added to the harmful effects on the ecosystem and biodiversity.

During the South West monsoon of 2019, another deluge had hit the state, wherein 1038 villages from 13 districts were notified¹ as affected by floods & landslides and 125 lives were lost. Sectors like housing, power, agriculture were affected badly and the damages have been reported in the memorandum. The state was hit by major floods in the two consecutive years of 2018 & 2019.

1.1. Monsoon Forecast and Preparedness

The 1st long range forecast (LRF) by India Meteorological Department (IMD) issued on 15th April 2019 predicted that the monsoon seasonal rainfall will be 96% of the Long Period Average (LPA) with a model error of $\pm 5\%$. Forecast also suggests maximum probability for normal monsoon rainfall (96-104% of LPA) and low probability for deficient rainfall during the season.

¹ G.O.(P)No.1/2019/DMD; Dated 23/08/2019

Based on this forecast, the State Relief Commissioner convened a meeting of all the departmental heads, district collectors, scientific organizations, IMD, Geological Survey of India, National Centre for Earth Science Studies and representatives of defence forces on 10th May 2019 in which all the stakeholders were assigned specific tasks for better preparedness during the monsoon season. Preparedness at the district level was reviewed by Chief Minister and Minister for Revenue and Disaster Management via video conference on regular intervals and specific instructions were issued regarding the implementation of the decisions of the monsoon preparedness meeting. All districts conducted District Disaster Management Authority meetings to ensure that the decisions of the monsoon preparedness meeting were taken forward for scrupulous implementation by the respective departments.

Kerala State Disaster Management Authority had prepared and published a handbook on Monsoon Preparedness which was approved by the State Executive Committee of KSDMA on 6th May 2019, the same has been made available to all the departments and also on the website of KSDMA.² An Orange book on disaster management which contains the Standard Operating Procedures (SOP) & Emergency Support Functions Plan (ESFP) was also published by the Kerala State Disaster Management Authority which guides the concerned departments to take appropriate action during emergencies. This document was approved by the State Executive Committee of KSDMA on 6th May 2019 and by the Government Vide GO (Rt) No. 280/2019/DMD dated 9th May 2019. This edition has incorporated Incident Response System (IRS) as a statutory requirement upto Taluk level in the state, Cyclone warning actions updated, included SOP for Floods and Monsoon preparedness (South West & North East) preparedness and emergency response plan.

IMD issued the 2nd stage LRF for the southwest monsoon season on 31st May 2019 in which they predicted that the monsoon rainfall will be 97% of LPA over South Peninsula with a model error of $\pm 8\%$. It was also predicted that the monthly rainfall over the country as a whole is likely to be 99% of LPA during August both with a model error of $\pm 9\%$. It is also indicated in the 2nd stage LRF that the forecast probability for 'above normal' rainfall was 10% and 'excess' was only 2%.

² www.sdma.kerala.gov.in

IMD Issued the Long Range Forecast for the rainfall during second half (August – September) of the 2019 southwest monsoon on 1st August 2019 in which they predicted that the monsoon rainfall will be 100% of LPA over the country with a model error of $\pm 8\%$.

1.2. Floods & Landslides 2019

Between August 8 and 31, 2019, Kerala experienced flood and landslides yet again. 2019 Monsoon had a weak and delayed start. Onset of monsoon was officially declared by IMD on June 8th, 2019. But Kerala received 32% deficient rainfall till July 31. Normally, June and July are the 'Rainy months' in Kerala. Till 31st July 2019, Wayanad, one of the most affected Districts was marked 55% deficiency in rainfall compared to the long period average (Normal). But due to the influence of low pressure area and depression formed over the Bay of Bengal and strengthening of Monsoon winds, Kerala state received large excess rainfall during the Month of August.

During the month of August 2019, Kerala received 123% excess rainfall than the long period average rainfall over the state. In August 2018 it was 96% excess rainfall than the long period average rainfall. Most affected districts in North and Central Kerala were Kozhikode (176%), Wayanad (110%), Malappuram (176%), Palakkad (217%), Thrissur (127%) Ernakulam (140%) which received more than 100% excess rainfall than the normal rain during the month of August. 7 out of 14 Districts from Kasargode to Thrissur received more than 1000 mm rainfall during 1st to 31 August 2019.

Figure 1 shows the map of notified villages affected by floods & landslides 2019.

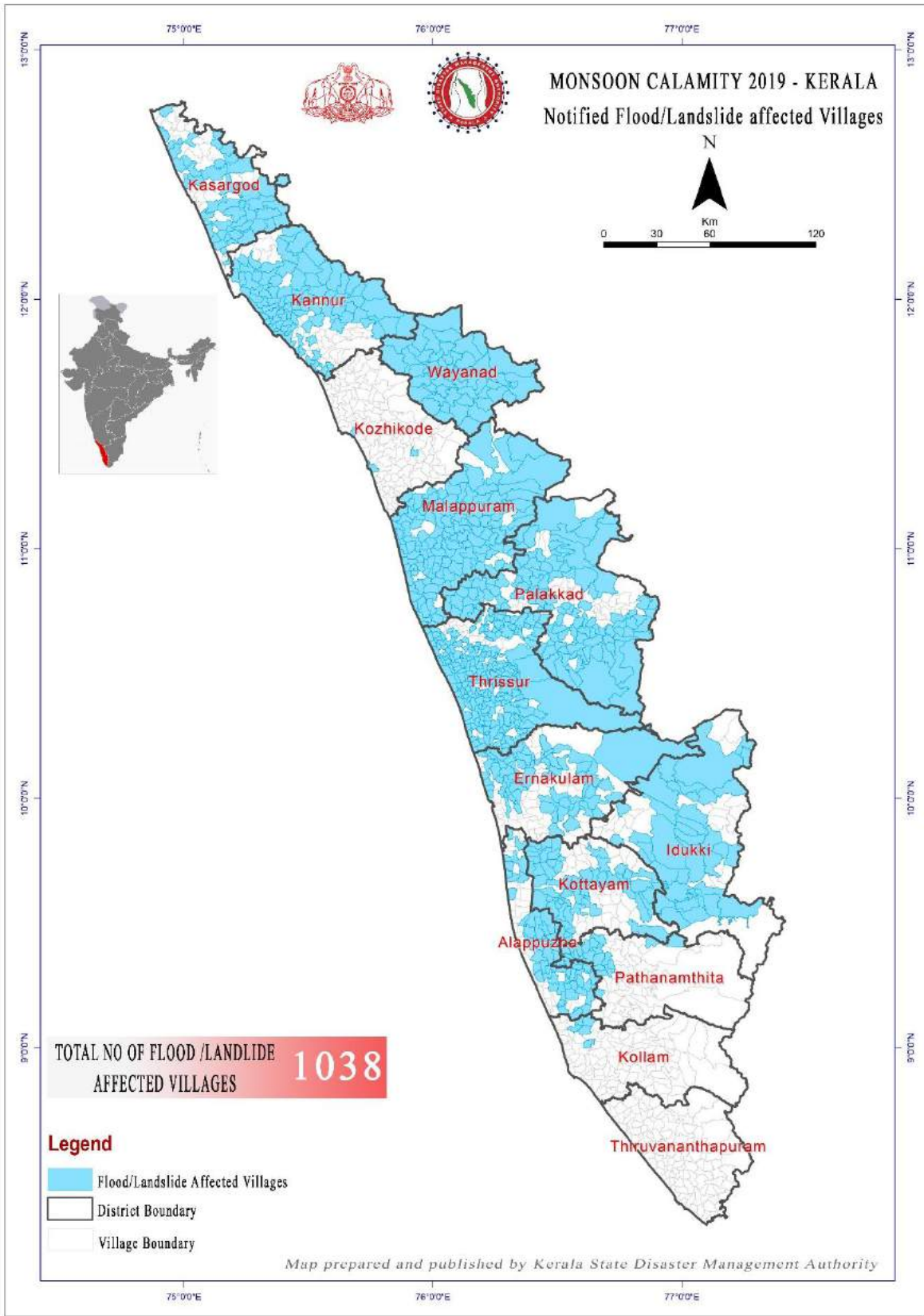


Figure 1: Map of Notified flood/ Landslide Affected Villages

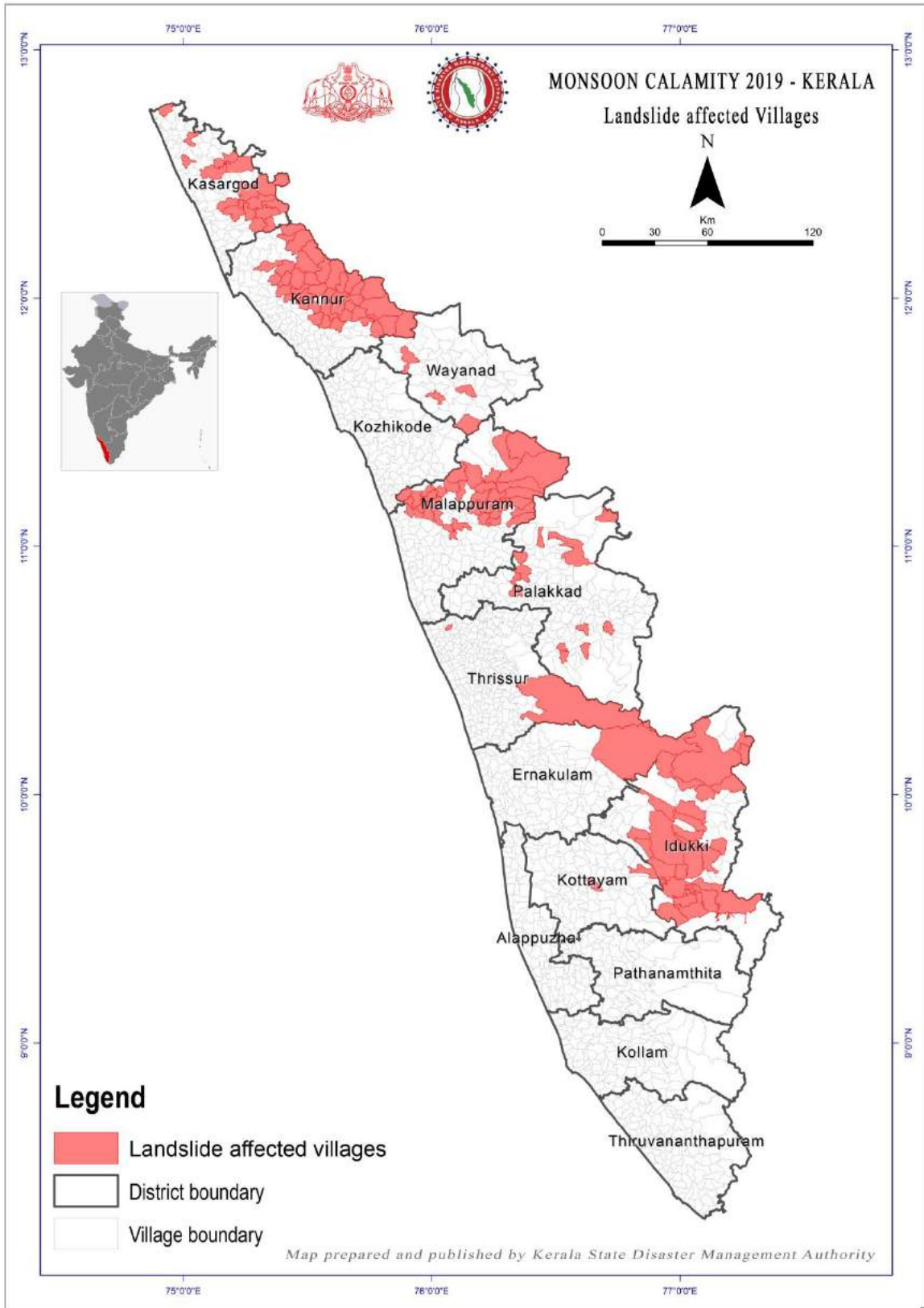


Figure 2: Map of Landslide Affected Villages

1.3. Immediate Response and Relief Operations

The state government responded immediately with rescue and relief operations. Emergency operations centre was opened on 8th August 2019 with deployment from central and state forces.

- On 8th August 2019, Hon'ble Chief Minister *inter alia* Chairperson SDMA reviewed the operations undertaken pertaining to monsoon calamity in the state. He also reviewed the situation on the following days twice daily from the State Emergency Operations Centre.
- The 24X7 Emergency Operations Centre was further strengthened into a full-fledged control room with representatives of forces including NDRF, Army, Air force, Coast Guard, ETF, MRC, Kerala Police, Fire & Rescue services.
- State Executive Committee meeting was held on 9th August 2019 to review the overall flood situation of the state. The SEC met the following days (10th August, 11th August) to discuss on the critical operations to be done in the affected districts, especially Malappuram & Wayanad.
- On 13th August, Hon'ble Chief Minister visited the landslide affected areas and camps along with Revenue Ministers and senior officials to assess the situation.
- Directions were given to camp managers with regard to provision of food, non-food items in the camp.
- www.keralarescue.in, the web portal to ensure better supply chain management of goods and services was restarted.
- All the districts strengthened their District Emergency Operations Centre with additional staff working 24 x 7.
- Announcements to the public were made and evacuations were done promptly.
- Dam operations were monitored continuously and information on dam water release was disseminated to the public in frequent intervals.
- Inter Agency Group (IAG) of NGOs and Civil Society Organizations at the state level was held at KSDMA on the 10th August 2019.

1.4. Monsoon Assessment

The peak of the rainfall which eventually led to devastating flood and landslide happened from August 6 to August 14, 2019. In this period Kerala received 602.2 mm rainfall which is 394% excess than the normal rainfall (122.0 mm) expected. All districts received more than 300% excess rainfall for the peak period. Many of the stations of India Meteorological Department have recorded extreme rainfall events (more than 200 mm rainfall in 24 hrs). During this period Vythiri station (Wayanad), Vadakara (Kozhikode), Ottappalam (Palakkad) stations of IMD have recorded more than 1000 mm rainfall in just 6 days.

In comparison with August 2018, number of extreme rainfall events were lesser in August 2019; however, number of rainy days are higher in August 2019 and 10 out of 14 districts have recorded monthly cumulative rainfall higher than August 2018. This year (2019), northern districts were affected the most in comparison to the previous years' floods which affected mostly the southern/central districts.

District wise Departure of average Rainfall during the month of August 2019 (Aug 1 - 31) is given in Table 1 as below:

Table 1 | District wise departure of average rainfall

District	Normal Rainfall (mm)	Actual Rainfall (mm)	Percentage Departure	
Kasargode	658.9	1194.5	81	Large Excess
Kannur	554	1107.2	100	Large Excess
Kozhikode	510.8	1407.8	176	Large Excess
Wayanad	568.3	1190.8	110	Large Excess
Malappuram	392.7	1084.2	176	Large Excess
Palakkad	324.8	1030.6	217	Large Excess

Thrissur	467.9	1062.0	127	Large Excess
Ernakulam	398.5	957.7	140	Large Excess
Alappuzha	339.1	676.1	99	Large Excess
Kottayam	375.7	763.0	103	Large Excess
Idukki	590.5	979.4	66	Large Excess
Pathanamthitta	333.6	717.7	115	Large Excess
Kollam	258.2	549.3	113	Large Excess
Thiruvananthapuram	144	325	126	Large Excess
State	426.7	951.4	123	Large Excess

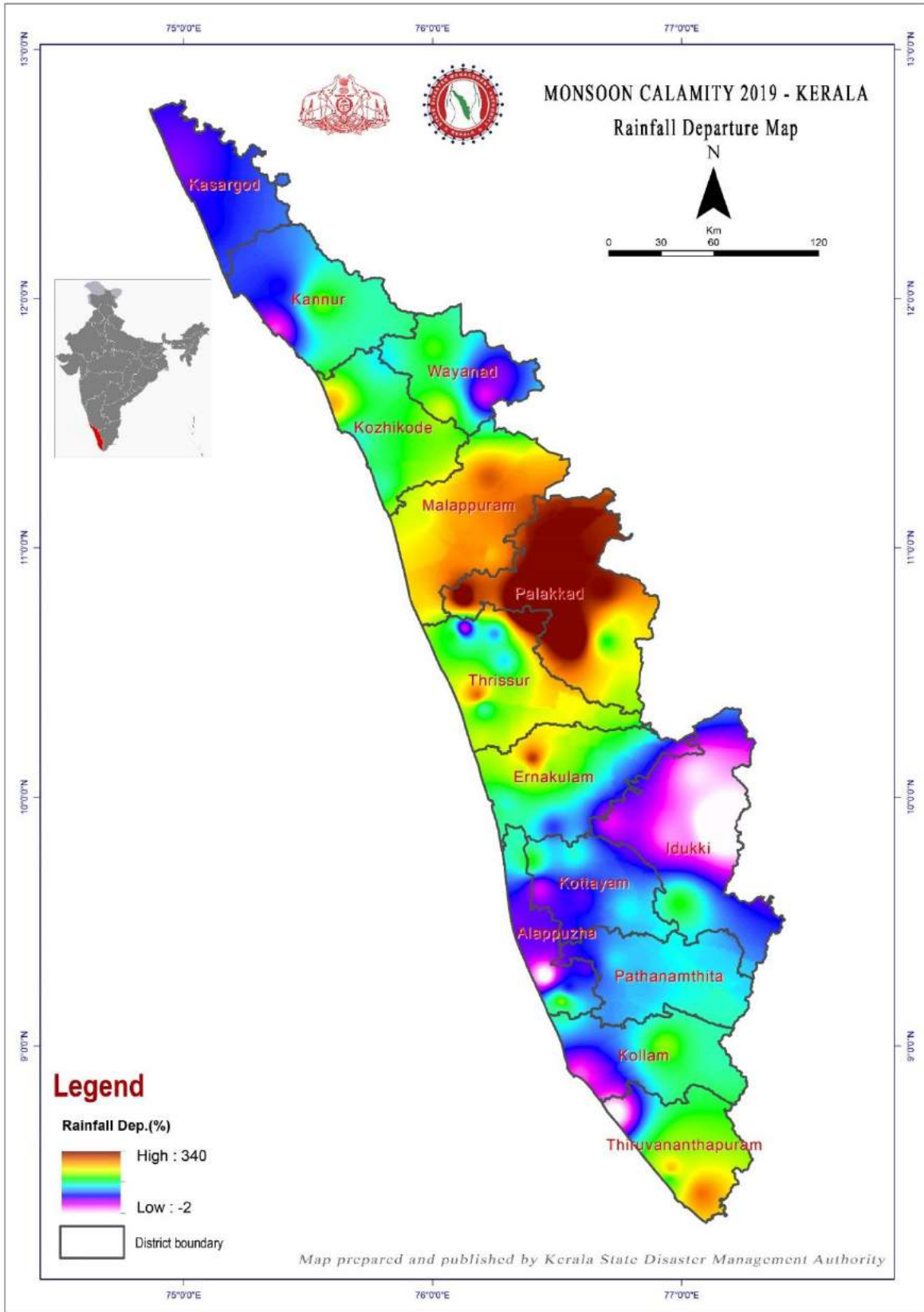


Figure 3: Rainfall Departure Map

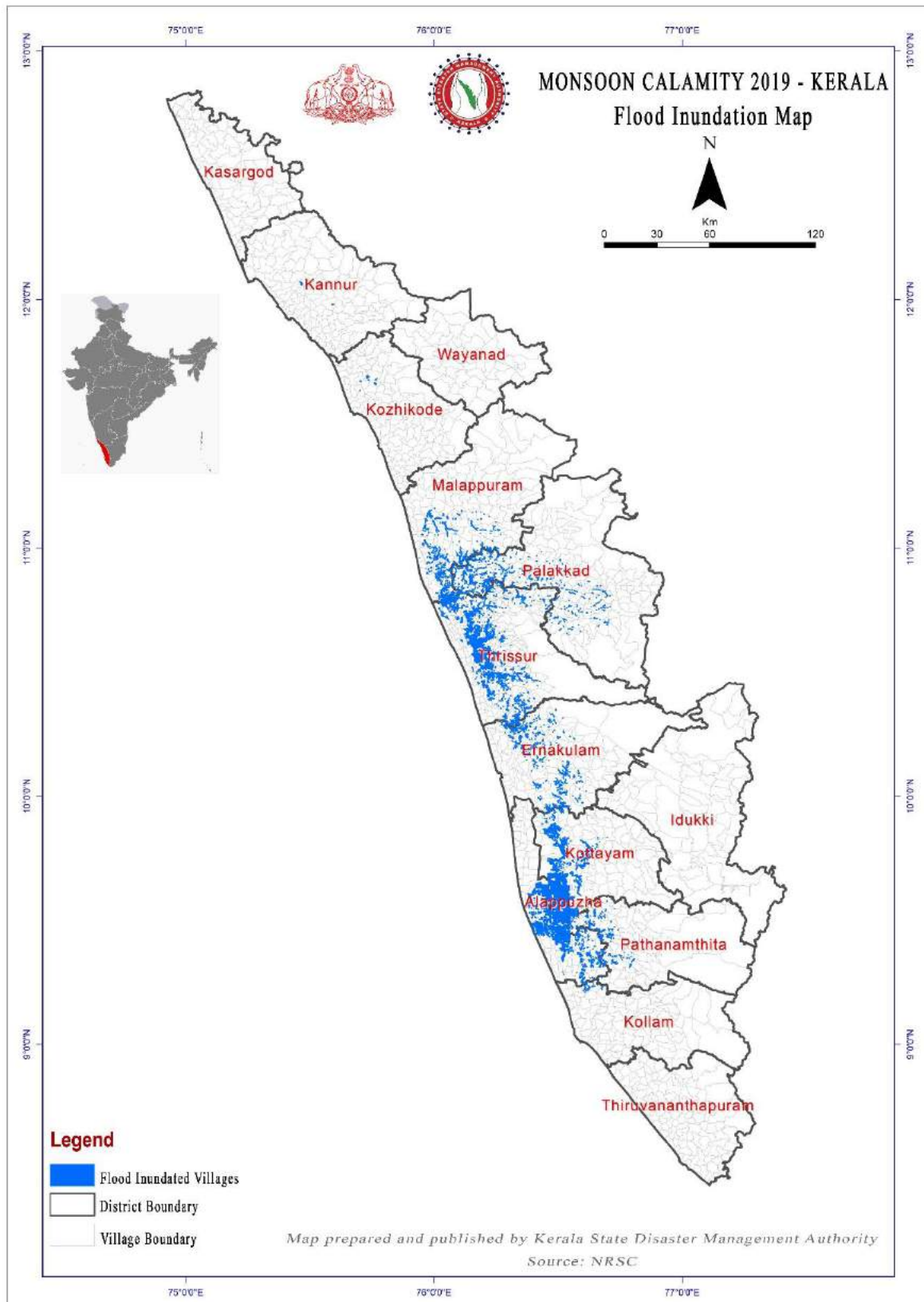


Figure 4: Flood Inundation Map

2. Assessment of Relief as per SDRF norms

2.1. Human Fatalities

One hundred and twenty five (125) lives were lost and 42 persons were injured during the period of this memorandum due to floods and landslides. Table 2 shows the district wise human fatalities reported. Malappuram district has lost the maximum lives which is 60. Table 3 shows the district wise list of people with grievous injury requiring hospitalization for less than a week. (Annexure 4)

Table 2 | District Wise Human Fatalities

District	Fatalities	Gratuitous relief @ ₹4 lakhs/ person (Rs. in lakhs)
Alappuzha	6	24
Kottayam	2	8
Idukki	5	20
Thrissur	9	36
Palakkad	1	4
Malappuram	60	240
Kozhikode	17	68
Wayanad	14	56
Kannur	9	36
Kasaragode	2	8
Total	125	500

Table 3 | District wise list of people with grievous injury requiring hospitalization for less than a week

Districts	Injuries	Gratuitous relief @ ₹4,300/ person (Rs. in lakhs)
Kottayam	4	0.172
Idukki	5	0.215
Ernakulam	1	0.043
Thrissur	8	0.344
Palakkad	11	0.473
Malappuram	4	0.172
Wayanad	9	0.387
Total	42	1.806

2.2. Agriculture

Nearly 52% of Kerala's population live in rural areas and 17.15% of the population depend on the agricultural sector (Including crops, livestock and fisheries) for its livelihood.³ The sector contributes to 11% of the total gross state value addition (GSVA) at current prices (crops 5.42%, livestock 3.84%, fisheries 1.78%)

The total geographic area of the State is 3886287 ha, out of which 2040000 ha is the sown area and gross cropped area is 2579000⁴. Agricultural crops in the state are broadly classified as food crops and non-food crops. Food crops are cereals, millets, sugar crops, spices and condiments, fresh fruits, vegetables, etc. The major non-food crops are rubber, betel leaves, lemon grass, etc. Another classification of crop is seasonal crops, annual crops and perennial crops which are based on their life time.

- a) Seasonal crops: Paddy, pulses, tapioca, vegetables, sweet potato, tubers, groundnut, ginger, turmeric, cotton, tobacco, onion, tur etc.
- b) Annual crops: Sugarcane, banana, plantain, pineapple, betel leaves etc.
- c) Perennial crops: Coconut, arecanut, cashew, mango, jack, tamarind, pepper, rubber, tea, coffee, cardamom, cloves, nutmeg, cinnamon, cocoa, papaya, etc.

Damages to Agriculture

The unprecedented heavy rains, floods and landslides of 2019 have caused exorbitant damage to the agriculture sector. Figure 4 shows the distribution of crops in Kerala. The details of district wise crop damage is given in Table 3. It may be noted that in Kerala, majority of the farmers are small and medium farmers. It is only the small and marginal farmers (SMF) who claim for damages via NDRF/SDRF. Hence, loss estimation and claim is made only for the SMF section. Table 5 shows the cost incurred for desilting and removal of debris.

³ Agriculture Census 2011, Department of Economics and Statistics, Govt. of Kerala

⁴ Economic Review 2018

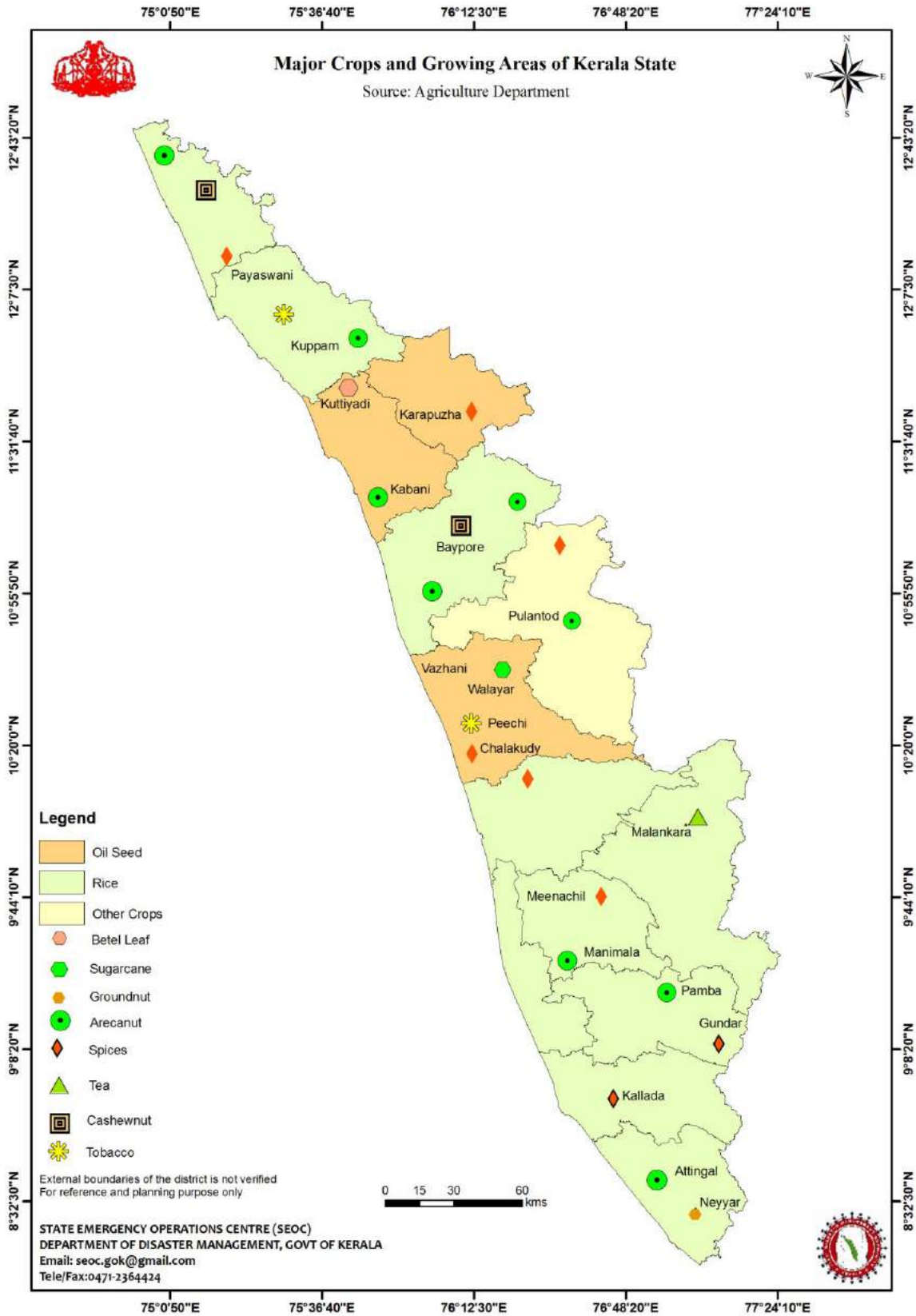


Figure 5: Major Crops and Growing Areas

Table 4 | District Wise Agricultural Losses (SMF Only)

District	Relief for areas belonging to SMF (out of the >33% crop damage area) (Rs. in Lakhs)			Relief as per norms (Rs. in lakhs)
	Rainfed @ 6800/ ha	Irrigated @ 13500/ ha	Perennial @ 18000/ ha	
Thiruvananthapuram	6.0724	68.914	5.280	80.267
Kollam	3.91816	27.684	2.893	34.495
Pathanamthitta	2.75876	36.762	4.142	485.960
Alappuzha	11.89782	451.159	22.903	43.663
Kottayam	7.242	357.822	18.902	383.967
Idukki	3.7332	42.622	113.159	159.514
Ernakulam	19.95392	117.380	23.633	160.966
Thrissur	1.7272	250.981	138.401	391.110
Palakkad	17.63852	1411.709	30.485	1459.833
Malappuram	23.64564	149.599	27.977	201.222
Kozhikode	1.1764	24.358	13.874	39.408
Wayanad	18.836	433.829	30.713	483.379
Kannur	1.381488	175.676	31.456	208.513
Kasargode	0.1088	38.171	18.704	56.984
Total	120.0903	3586.667	482.523	4189.281

Distict wise areas affected, belonging to SMF out of the total agricultural area with >33% crop damage, considered for the calculations given in Table 4 is given in Annexure 6.

Table 5 | District Wise Assistance for Land and other losses (Agriculture)

District	Area affected (ha)	De-silting of sand/silt (>3 inch deposit @Rs. 12,200/ hectare for each item) (Rs. in Lakhs)	Cost of Draining Flood Water from Agricultural Land (Rs. in Lakhs)	Loss of substantial portion of land [Rs. 37,500/- per hectare to only those small and marginal farmers whose ownership of the land is legitimate as per the revenue records]	Relief as per norms (Rs. in lakhs)
Alappuzha	1019.67	2.00984	100	0	1121.67984
Kottayam	4670	463.6	0	3.75	467.35
Idukki	35.2	0	0	11.25	11.25
Thrissur	113	13.79	0	0	14

Palakkad	6.5	0	0	2.43	2
Malappuram	300	36.6	0	112.5	149
Kozhikode	10	0	0	3.75	4
Wayanad	60	0	0	8.62	9
Kannur	30	3.05	0	1.875	5
Total	6244.37	519.04984	100	144.175	1783.27984

2.3. Debris clearance from public land

The Local Self Government Department has through its various agencies conducted massive cleaning of public assets and community assets.

Table 6 shows the cost incurred for cleaning debris from public land.

Table 6 | District wise assistance for debris clearance from public land

District	Number of Urban Wards	Cost @ ₹1,00,000/ward (Rs. in Lakhs)	Number of Rural Wards	Cost @ ₹50,000/ward (Rs. in Lakhs)
Alappuzha	51	51	287	143.5
Ernakulam	96	96	308	154
Kottayam	51	51	140	70
Pathanamthitta	28	28	142	71
Thrissur	96	96	432	216
Malappuram	15	15	120	60
Wayanad	19	19	93	46.5
Idukki	23	23	264	132
Total	379	379	1786	893

2.4. Housing

According to the 2011 housing census, there were 336 houses for every 1000 persons in Kerala. (all-India 273 houses per 1000 persons). The settlement pattern of Kerala is of a rural and urban continuum with different varieties of housing typologies, predominantly reinforced cement concrete (RCC).

One of the major sectors which was impacted severely is Housing. District wise details of number of fully and severely damaged houses with estimated loss are given in Table 7.

Table 7 | District Wise House Damage – Pucca

Districts	Fully Damaged Houses		Severely Damaged Houses		Total Amount (Rs. in Lakhs)
	Number	Amount @ Rs. 95,100/ house in plain aeass and Rs. 1,01,900/ house in hilly areas (Rs. in Lakhs)	Number	Amount @ Rs. 95,100/ house in plain aeass and Rs. 1,01,900/ house in hilly areas (Rs. in Lakhs)	
Thiruvananthapuram	9	8.559	196	186.396	194.955
Kollam	11	10.461	420	399.42	409.881
Pathanamthitta	8	7.608	119	113.169	120.777
Alappuzha	28	26.628	424	403.224	429.852
Kottayam	11	10.461	215	204.465	214.926
Idukki	74	75.406	635	647.065	722.471
Ernakulam	27	25.677	350	332.85	358.527
Thrissur	80	76.08	689	655.239	731.319
Palakkad	186	176.886	2043	1942.893	2119.779
Malappuram	795	756.045	3409	3241.959	3998.004
Kozhikode	89	84.639	1079	1026.129	1110.768
Wayanad	472	480.968	7230	7367.37	7848.338
Kannur	133	126.483	2026	1926.726	2053.209
Kasaragod	44	41.844	462	439.362	481.206
Total	1967	1907.745	19297	18886.27	20794.012

1967 houses have been fully (100%) damaged and 19,297 houses have been severely damaged (>75%). The relief amount has been calculated as per the existing norms. i.e. Rs 95,100/- in plain areas and Rs 1,01,900/- in hilly areas.

District wise details of number of partially damaged houses with estimated loss is given in Table 8.

Table 8 | District wise house damage estimates – Partial (Flood hit and cleaned)

District	Urban		Rural		Total No. of houses flood hit and cleaned	Total Cost (Rs. in Lakhs)
	No. of houses flood hit and cleaned	Cost @ Rs. 25000/ house (Rs. in Lakhs)	No. of houses flood hit and cleaned	Cost @ Rs. 25000/ house (Rs. in Lakhs)		
Thiruvananthapuram	0	0	2	0.5	2	0.5
Kollam	0	0	484	121	484	121
Pathanamthitta	495	123.75	3434	858.5	3929	982.25
Alappuzha	328	82	15430	3857.5	15758	3939.5
Kottayam	2488	622	24008	6002	26496	6624
Idukki	0	0	245	61.25	245	61.25
Ernakulam	3278	819.5	10786	2696.5	14064	3516
Thrissur	3686	921.5	19458	4864.5	23144	5786
Palakkad	1660	415	5519	1379.75	7179	1794.75
Malappuram	10945	2736.25	37067	9266.75	48012	12003
Kozhikode	16833	4208.25	30701	7675.25	47534	11883.5
Wayanad	1509	377.25	7570	1892.5	9079	2269.75
Kannur	3228	807	11957	2989.25	15185	3796.25
Kasaragode	2512	628	2634	658.5	5146	1286.5
Total	46962	11740.5	169295	42323.75	216257	54064.25

2.5. Fisheries

Fisheries is considered to be one of the most important and productive sectors of the state. Fisheries sector contributes around 1.58% to the total GDP and the export of marine products has set ever time record of Rs 5919.02 crores during the year 2017-18. About 3 per cent of the economy is attributed to Fisheries. Many species of fish, invertebrates, plants, algae and other aquatic living organisms occupy a wide variety of habitats along the vast coastline and associated waters of the state. The aquatic biodiversity and fish wealth of Kerala sustain more than 10 lakh fisherfolks and supports numerous additional activities including commercial fishing, aquaculture, tourism, education etc.

Floods and Landslides of 2019 have caused widespread damages to the fisheries sector of the state. Fishing assets such as boats and nets have been destroyed. Houses of fishermen were damaged, beyond repairs. Aquaculture of the state has been adversely affected to a great extent.

As many as 54 boats were fully damaged. Alappuzha district, where 21 boats have been damaged, leads the list. Out of the 126 boats that have been partially damaged, 47 boats have solely been in Alappuzha district. A total of 696 nets have been fully damaged while 20 nets have been partially damaged in Kerala. Financial loss due to fully damaged nets is Rs. 18,09,600 whereas the loss due to the partially damaged nets is ₹ 42,000 . Alappuzha district suffered the highest loss due to damage of nets as 412 nets have been fully damaged and 2 nets have been partially damaged in the district. As far as damage to fish farms are concerned, a whopping 7081.85 ha worth ₹5,80,74,814.28 have been affected due the calamity. Thrissur district tops the list for the same as 4356 hectares of farms worth ₹3,57,22,832.60 have been affected in the district. The details of district wise damages are given below in Table 9 and 10.

Table 9 | Damage to Fisheries sector - District Wise

District	Cost of fully damaged boat @ Rs. 9600/ boat	Cost of partially damaged boats @ Rs. 4100/ boat	Cost of fully damaged nets @ Rs. 2600/ net	Cost of partially damaged nets @ Rs. 2100/ net	Total cost as per norms (Rs. in Lakhs)
Trivandrum	57600	4100	5200	2100	0.69
Kollam	28800	12300	7800	0	0.489
Pathanamthitta	9600	0	223600	0	2.332
Kottayam	0	0	13000	0	0.13
Alappuzha	201600	192700	1071200	4200	14.697
Ernakulam	0	4100	5200	0	0.093
Thrissur	0	4100	13000	0	0.171
Idukki	0	0	0	31500	0.315
Palakkad	57600	41000	325000	0	4.236
Malappuram	163200	36900	23400	0	2.235
Kozhikode	0	102500	7800	4200	1.145
Kannur	0	114800	114400	0	2.292
Kasargode	0	4100	0	0	0.041
TOTAL	518400	516600	1809600	42000	28.866

Details such as no. of boats and nets damaged is given in Annexure 7.

Table 10 | Fish farms - Input subsidy to fish seed farm

District	Area of fish farms affected (ha)	Cost as per norms @ Rs. 8200/ ha (Rs. in lakhs)
Kollam	3.2184	0.2639088
Pathanamthitta	96.200	7.8884
Kottayam	196.438	16.10792
Alappuzha	1,374.720	112.72704

Ernakulam	83.034	6.808788
Thrissur	4356.000	357.228326
Idukki	6.014	0.49314
Palakkad	38.940	3.19308
Malappuram	588.000	48.216
Kozhikode	39.038	3.20112
Wayanad	40.919	3.35536
Kannur	257.000	21.07400
Kasargode	2.330	0.19106
TOTAL	7081.8514	580.7481428

2.6. Animal Husbandry

The calamity has also affected the Animal Husbandry sector. The unprecedented rainfall which triggered flooding in the state has resulted in the death of large number of cattle, buffaloes, goats and poultry. Further, destruction of cattle sheds, shortage of fodder, veterinary medicines and vaccines added to the plight.

A total of 1183 cattles died, which includes 354 cows and buffalo, 475 goat and 354 calves. Around 459167 poultry died in these flash floods. The details of district wise damages are given in Table 11.

Table 11 | Distrit wise damages to Animals/Poultry and Sheds in Animal Husbandry

District	Milch animal/ Poultry (Rs. in Lakhs)	Cattle shed/ poultry shed @2,100/ shed (Rs. in Lakhs)	Total Assistance (Rs. in Lakhs)
Thiruvananthapuram	0	0.105	0.10500
Kollam	1.1075	1.659	2.7665
Pathanamthitta	7.182	1.701	8.883
Alappuzha	20.9315	8.568	29.4995
Kottayam	13.5845	2.037	15.6215
Idukki	4.9085	1.239	6.1475
Ernakulam	21.1255	1.764	22.8895
Thrissur	62.488	4.368	66.856
Palakkad	32.6695	14.133	46.8025

Malappuram	177.55250	22.155	199.7075
Kozhikode	24.362	18.795	43.157
Wayanad	13.0175	8.673	21.6905
Kannur	26.8645	8.148	35.0125
Kasargod	0.88000	3.759	4.639
Total	406.6735	97.104	503.7775

Table 12 | Item wise assistance in Animal Husbandry

Item	Assistance (Rs. in lakhs)
Milch animal/ Poultry	406.6735
Cattle shed/ poultry shed @ 2100/ shed	97.104
Provision for feed and concentrate @ Rs. 70/ day for large animals and Rs. 35/ day for small animals (Annexure 9)	116.5412
Additional Cost of Medicines and Vaccines	26
Total	646.3187

Detailed list of milch animal and poultry fatality and respective relief calculations are given in Annexure 8.

The flood has resulted in the death of 1204 large animals, 1085 small animals and 103057 birds. The state has scientifically buried these carcasses. This has incurred substantial cost to the state, roughly @₹5000 per large animal, ₹1000 per small animal and ₹30 per bird, on an average. Depending on the terrain and proximity to dry land, the cost may be lesser or more.

Table 13 | District wise number of carcasses disposed

District	Large Animals- Cost @ Rs 5000/ large animal (Rs. in Lakhs)	Small Animals- Cost @ Rs. 1000/ small animal (Rs. in Lakhs)	Birds- Cost @ Rs. 30/ bird (Rs. in Lakhs)	Total Expense (Rs. in Lakhs)
Pathanamthitta	0	0.01	0	0.01
Alappuzha	0	0	0.0006	0.0006
Kottayam	0.1	0.17	0.1356	0.4056
Idukki	0	0.01	0	0.01
Thrissur	0	0.22	6	6.22
Palakkad	0	0	3.606	3.606
Malappuram	2.35	5.99	14.3103	22.6503
Kozhikode	50.55	0.22	0.555	51.325

Wayanad	0.9	2.51	2.2461	5.6561
Kannur	6.3	1.72	4.0635	12.0835
Total	60.2	10.85	30.9171	101.9671

Table 14 | District wise losses to Dairy Development Department

District	Animals/ Cattle Shed Loss (Rs. in Lakhs)	Milk Procurement Loss (Rs. in Lakhs)	Feed & Fodder Loss (Farmers) (Rs. in lakhs)	Society Loss (Rs. in Lakhs)	Total Losses (Rs. in lakhs)
Kollam	40.60	0.51905	17.8854	0.264	59.26845
Pathanamthitta	27.45	3.48705	19.799	0.0	50.73605
Alappuzha	154.40	8.3825	71.869	5.1916	239.8431
Kottayam	55.95	2.16825	32.129	0.336	90.58325
Idukki	50.65	0.525	31.85	8.452	91.477
Ernakulam	35.35	40.138	84.218	1.084	160.79
Thrissur	93.90	15.057	48.726	0.5	158.183
Palakkad	334.35	31.36105	253.1342	19.36472	638.20997
Malappuram	402.15	63.3199	112.12	30.432	608.0219
Kozhikode	358.35	62.55515	303.7165	81.954	806.57565
Wayanad	179.80	13.615	184.141	1.30024	378.85624
Kannur	164.75	23.37965	128.7708	17.636	334.53645
Kasargod	55.55	3.18710	46.2991	0.3	105.3362
Total	1953.25	267.69470	1334.658	166.81456	3722.41726

2.7. Power

The unprecedented rainfall which triggered flooding in the state has resulted in heavy loss to Power Sector. All three activity divisions viz. Generation, Transmission and Distribution Wings suffered heavy loss. Table 15 shows the cost incurred for repair of the power sector.

Table 15 | Restoration Cost of Power Sector

District	Cost of poles @ 4000/pole (Rs. in Lakhs)	Cost of conductors @ 50000/ km (Rs. in Lakhs)	Cost of transformers @ 1 lakh/ transformer (Rs. in Lakhs)	Total amount incurred (Rs. in Lakhs)
Thiruvananthapuram	48.44	588.60	9.00	646.04
Kollam	38.92	416.90	11.00	466.82
Pathanamthitta	50.52	234.20	16.00	300.72
Kottayam	67.80	514.70	67.00	649.50
Alappuzha	36.72	229.60	10.00	276.32
Ernakulam	63.40	663.60	32.00	759.00
Idukki	126.44	321.70	12.00	460.14
Trissur	80.88	763.50	35.00	879.38
Palakkad	155.28	1106.30	14.00	1275.58
Malappuram	146.80	1182.70	121.00	1450.50
Kozhikode	152.32	1339.40	23.00	1514.72
Wayanad	53.08	168.00	20.00	241.08
Kannur	147.80	579.80	38.00	765.60
Kasargode	76.76	428.00	37.00	541.76
Total	1245.16	8537	445.00	10227.16

Details such as the no. of poles, length of conductors and no. of transformers damaged is given in Annexure 10.

2.8. Public Works Department

Due to the extremely devastating monsoon calamity in the form of floods and landslides, Public Works Department (PWD) has suffered unprecedented losses as evidenced by damage to physical infrastructure especially roads and bridges. All types of roads and bridges have been affected badly.

A total of 3900.17 kilometres of roads have been damaged in Kerala. At one lakh rupees per kilometre, a colossal amount of ₹39,00,16,600/- would be required to immediately restore the damages. Idukki is the worst hit district in this context as 489 kilometres of roads have been damaged in the district, followed closely behind is Thrissur where 458 kilometres of roads have been damaged. Moving on, as many as 95 bridges have been damaged due to the calamity.

Around Rs.1,64,49,22,000 would be required for rectifying the damages to bridges. The highest number of bridges damaged has been in Palakkad, as 21 bridges have been damaged in the district. Table 16 and Table 17 shows the cost incurred for immediate restoration of roads and bridges.

Table 16| Cost incurred for restoration of roads

District	Length of roads damaged (in Km)	Total amount required for rectifying damages (@Rs. 1 lakh/km) (Rs. In Lakhs)
Trivandrum	275.71	275.71
Kollam	108.876	108.876
Pathanamthitta	110.32	110.32
Idukki	489.744	489.744
Kottayam	323.02	323.02
Alappuzha	56.75	56.75
Ernakulam	320.525	320.525
Thirssur	458.96	458.96
Palakkad	379.48	379.48
Malapuram	414.762	414.762
Kozhikode	202.5	202.5
Wayanad	401.28	401.28
Kannur	132.029	132.029
Kasargod	226.21	226.21
Total	3900.166	3900.166

Table 17 | Cost incurred for restoration of bridges

District	No. of Damaged Bridge	Cost of damage including Construction (Rs. in lakhs)	Remarks
Thiruvananthapuram	2	890	2 Nos. to be reconstructed
Kollam	0	0	
Pathanamthitta	0	0	
Alappuzha	7	3387	7 Nos. to be reconstructed
Kottayam	2	6.32	
Idukki	2	12.80	
Ernakulam	11	670.5	3 Nos. to be reconstructed

Thrissur	13	1692.5	3 Nos. to be reconstructed
Palakkad	21	711.65	1 No. to be reconstructed
Malappuram	14	3151.5	2 No. to be Reconstructed
Kozhikkode	9	2994	5 No. to be Reconstructed
Wayanad	3	50	
Kannur	11	2882.95	4 Nos. to be reconstructed
Kasargode	0	0	
Grand Total	95	16449.22	27 Nos. to be reconstructed

In case of repair of bridges, assistance will be given as per the schedule of rates notified by the state.

2.9. Irrigation and Water Sector

The gross irrigated area in the state is 540000 ha⁵. The entire water supply system got totally disrupted due to the flood. The Kerala Water Authority and Irrigation departments run a large network of water supply for drinking as well as for irrigation purposes. Both of these sectors had a broad network of pipelines and canal systems which were passing through the urban and rural areas in Kerala. Irrigation canals, Public Taps, Pipelines, Pump houses, check dams, Bunds, Irrigation Pumps and other irrigation machineries and structures got damaged due to Floods, landslides and landslips. Most of the engineering structures washed away by huge landslides and inundated by flooding. Huge losses in machineries, equipments, structural and non-structural assets have been estimated by the concerned authorities.

Table 18 | Damage to Irrigation & Water Supply Sector

District	Irrigation sector - Cost (Rs. in Lakhs)		Water Supply sector - Cost (Rs. in lakhs)	Total (Rs. in Lakhs)
	Schemes @ Rs. 1.5 lakh/ structure	Embankments @ Rs. 60,000/ km		
Thiruvananthapuram	36	23.1	15	66.27
Kollam	70.6	91.56	6	165.56
Pathanamthitta	399.25	249.98	28.5	665.38
Alappuzha	0	1254.68	37.5	1283.18
Kottayam	523.2	540.39	90	1145.84

⁵ Economic Review 2018

Idukki	240.5	29.75	45	301.9
Ernakulam	175	4.8	157.5	262.69
Thrissur	267.72	3	162	386.24
Palakkad	2725.12	212.8	196.5	3031.13
Malappuram	285	795.1	183	1199.43
Kozhikode	1079.35	708	85.5	1854.55
Wayanad	290.55	17	72	371.6
Kannur	661.52	477.6	28.5	1155.8
Kasargode	20.71	428	10.5	456.01
Total	6774.52	4835.76	1115.5	12345.58

Details of no. of water supply structures damaged are given in Annexure 11.

2.10. Gratuitous relief

Within the provisions of the State Disaster Response Fund, the Government extended gratuitous relief to the affected community. People were housed in camps and outside the camps with relatives and in foster homes. Government supported them with relief assistance and sustenance. Drinking water supply was also undertaken to these camps. Details of district wise peak numbers in camps are given in Annexure 12.

Table 19 | Cost incurred for running relief camps

District	Camps	No: of inmates	Cost @ Rs 200/- per person for 20 days (Rs. in lakhs)
Trivandrum	7	708	28.32
Kollam	3	1249	49.96
Pathanamthitta	97	8387	335.48
Alappuzha	126	125057	5002.28
Kottayam	181	24585	983.4
Idukki	26	22019	880.76
Ernakulam	169	43618	1744.72
Thrissur	1515	122871	4914.84
Palakkad	47	22168	886.72
Malapuram	258	71070	2842.8
Kozhikode	321	94031	3761.24
Wayanad	214	60416	2416.64
Kannur	155	32126	1285.04
Kasargod	32	4393	175.72
Total	3151	612698	24507.92

Table 20 | Cost incurred for supply of drinking water to relief camps

District	No of tanks/ boats	No of trips	Cost (Rs. in lakhs)
Trivandrum	0	0	0
Kollam	0	0	0
Pathanamthitta	0	0	0
Idukki	0	0	0
Kottayam	10	19	0.97
Alappuzha	0	0	0
Ernakulam	120	20	0
Thirssur	80	3	0.114
Palakkad	6	5	0
Malapuram	31	554	1.8
Kozhikode	41	151	2.6
Wayanad	5	60	0
Kannur	24	176	1
Kasargod	0	0	0
Total	11508	986	6.484

Table 21 | Gratuitous relief for families whose livelihood is seriously affected

District	Total Number families	Total Cost incurred (Rs. in Lakhs)
Thiruvananthapuram	177	25.488
Kollam	312	44.928
Alappuzha	2097	301.968
Kottayam	6264	902.016
Pathanamthitta	6146	885.024
Idukki	4632	667.008
Ernakulam	11184	1610.496
Thrissur	65718	9463.392
Palakkad	4765	686.16
Wayanad	17768	2558.592
Malappuram	47342	6817.248

Kozhikode	24563	3537.072
Kannur	27534	3537.072
Kasargod	1098	158.112
Total	219600	31622.4

Note: Gratuitous relief for families whose livelihood is seriously affected – Calculation: Rs 60/- x 60 days x 4 adults/family. Limited to Rs. 10,000/family by SEC decision)

Table 22 | Cost of immediate assistance for loss of utensils and clothes

District	Total Number families	Total Cost incurred (Rs. in Lakhs)
Thiruvananthapuram	177	6.726
Kollam	312	11.8655
Alappuzha	2097	79.6765
Kottayam	6264	238.0415
Pathanamthitta	6146	233.5575
Idukki	280	10.6305
Ernakulam	5905	224.371
Thrissur	65718	2497.275
Palakkad	2292	87.096
Wayanad	17768	675.165
Malappuram	16008	608.2945
Kozhikode	8854	336.452
Kannur	6532	248.197
Kasargod	1098	41.7335
Total	139411	5297.61

The cost of search and rescue incurred from SDRF may be paid in actuals as given below. Further, the fuel bills of India Air Force may be paid from NDRF directly.

Table 23 | Cost of Search and Rescue

District	Cost in lakhs
Alappuzha	10
Kottayam	0.12
Ernakulam	0.55
Thirssur	2.15
Palakkad	.55
Malapuram	119
Kozhikode	7
Wayanad	100
Kannur	16
Kasargod	15
Total	270.37

2.11. Community Owned Assets

In Kerala, majority of people depend on open wells for household drinking water needs. Many of these wells have been damaged. These drinking water structures needs to be immediately restored for which an amount of ₹10,000/- is calculated. Heavy losses were incurred to the roads, bridges, community owned wells etc. The flood waters gushed through the roads, making them severely unfit for passage. These roads need to be built better to be used with immediate effect. At many places, the rivers breached the banks depositing huge amounts of silt. The fact that many areas in rural Kerala still entirely depends on well water for the basic needs required immediate restoration of the wells. The overflowing of canals resulted in flooding of several localities and hence the bunds had to be restored and reinforced. The tables below shows the loss incurred to the community owned assets such as length of village roads, anganwadis, CHCs, PHCs, schools etc.

Table 24 | Cost incurred for repair and restoration of community owned drinking water structures

District	No. of affected wells	Cost @ Rs. 10,000/ well (Rs. in Lakhs)
Kollam	97	9.7
Pathanamthitta	971	97.1
Alappuzha	1499	149.9
Kottayam	10936	1093.6
Idukki	79	7.9
Ernakulam	4458	445.8
Thrissur	17650	1765
Palakkad	4516	451.6
Malappuram	41748	4174.8
Kozhikode	43085	4308.5
Wayanad	3945	394.5
Kannur	15011	1501.1
Kasaragode	4768	476.8
Total	148763	14876.3

Table 25 | Cost Incurred for immediate restoration of community owned infrastructure (Grama Panchayath, Block Panchayath & District Panchayth)

Damaged Community Assets - District (ZP), Block Panchayath (BP) & Grama Panchayath (GP)										
District	No.of Schools	Amount Claimed @ 2 lakh / school	No. of Anganawadis	Amount claimed @ 2 lakh/ anganwadi	No.of Primary Health Centres	Amount Claimed @ 2 lakh/ PHC	No.of Panchayat owned buildings	Amount claimed @ 2 lakh/ building	LSG Roads (KM)	Amount Claimed @ 0.6 lakh/km (Rs. in Lakhs)
Thiruvananthapuram	2	4	0	0	0	0	0	0	0	0
Kollam	0	0	2	4	1	2	0	0	0	0
Pathanamthitta	0	0	0	0	0	0	0	0	0	0
Alappuzha	3	6	0	0	0	0	0	0	1.82	1.092
Kottayam	4	8	1	2	1	2	2	4	35.105	21.063
Idukki	4	8	5	10	2	4	5	10	5.55	3.33
Ernakulam	0	0	13	26	2	4	0	0	2.68	1.608
Thrissur	7	14	14	28	6	12	14	28	104.14	62.484
Palakad	10	20	34	68	7	14	6	12	266.525	159.915
Malapuram	10	20	58	116	10	20	9	18	215.5	129.3
Kozhikode	6	12	43	86	6	12	14	28	161.37	96.822
Wayanad	13	26	7	14	4	8	9	18	7	4.2
Kannur	12	24	25	50	6	12	14	28	181.06	108.636
Kasargoade	6	12	8	16	4	8	5	10	129.96	77.976
TOTAL	77	154	210	420	49	98	78	156	1110.71	666.426

Table 26 | Cost Incurred for immediate restoration of community owned infrastructure (Municipality)

Damaged Community Assets - Municipality										
District	No. of Schools	Amount claimed @ 2 lakh/ school	No. of Anganawadis	Amount claimed @ 2 lakh/ anganwadi	No. of Primary Health Centres	Amount claimed @ 2 lakh/ PHC	No. of Municipality owned buildings	Amount claimed @ 2 lakh/ building	LSG Roads (km)	Amount claimed @ 0.6 lakh/ km (Rs. in Lakhs)
Kottayam	0	0	0	0	0	0	0	0	4.255	2.553
Ernakulam	0	0	3	6	1	2	4	8	8.7	5.22
Thrissur	0	0	2	4	0	0	1	2	7.88	4.728
Palakkad	0	0	2	4	0	0	1	2	52.715	31.629
Malappuram	3	6	14	28	4	8	3	6	16.45	9.87
Kozhikode	0	0	32	64	1	2	0	0	16.415	9.849
Wayanad	2	4	2	4	2	4	2	4	18	10.8
Kannur	1	2	6	12	2	4	1	2	147.53	88.518
Kasargode	0	0	2	4	0	0	2	4	31.35	18.81
Total	6	12	63	126	10	20	14	28	303.295	181.977

Table 27 | Cost Incurred for immediate restoration of community owned infrastructure (Corporation)

Damaged Community Assets - Corporation										
District	No. of Schools	Amount claimed @ 2 lakh/ school	No. of Anganawadis	Amount claimed @ 2 lakh/ anganwadi	No. of Primary Health Centres	Amount claimed @ 2 lakh/ PHC	No. of Corporation owned buildings	Amount claimed @ 2 lakh/ building	LSG Roads (km)	Amount claimed @ 0.6 lakh/ km (Rs. in Lakhs)
Kozhikode	7	14	10	20	2	4	2	4	61.475	36.885
Kannur	1	2	0	0	0	0	0	0	22	13.2
Total	8	16	10	20	2	4	2	4	83.475	50.085

Abstract of Claims

SL. NO.	ITEMS	RATE (In Rupees)	QUANTIT Y	AMOUNT (Rupees In Lakhs)
1	GRATUITOUS RELIEF			
	a) Ex-Gratia payment to families of deceased persons (Table 2)	4,00,000/ person	125 persons	500
	b) Grievous injury requiring hospitalization	4,300/- per person requiring hospitalization for less than a week.	42 persons	1.806
	c) Clothing and utensils / house-hold goods for families whose houses have been washed away/fully damaged/ severely inundated for more than two days due to a natural calamity	Clothing- 1800/ family	139411 families	5297.61
		Utensils- 2000/ family		
d) Gratuitous relief for families whose livelihood is seriously affected	60/day for 60 days x 4 adults/family.	219600 families	31622.4	
2	AGRICULTURE			
	a) Agricultural loss (SMF only) (Table 4) (State is not claiming any amount for non SMF)	Rainfed crops- 6800/ ha	1766.034 Ha	4189.281
		Irrigated crops- 13500/ ha	26567.9046 Ha	
		Perennial crops- 18000/ ha	2680.684 Ha	
	b) De-silting of agricultural land with >3 inch deposit (Table 5)	12200/ ha		519.04984
	c) Draining flood water from agricultural land (Table 5)	As per actuals		1783.27984
	d) Loss of substantial portion of land to SMF (Table 5)	37500/ ha		144.175
3	DEBRIS CLEARANCE FROM PUBLIC LAND			
	Urban (Table 6)	1,00,000/ ward	379 wards	379
	Rural (Table 6)	50,000/ ward	1786 wards	893
4	HOUSING			
	a) Fully damaged/ destroyed houses (Table 7)	Hilly districts- 1,01950	1967 houses	1907.745
		Plains- 95,100		
	b) Severely damaged houses (Table 7)	Hilly districts- 1,01950	19297 houses	18886.27
		Plains- 95,100		
c) Partially damaged houses (flood hit and cleaned) (Table 8)	25,000	216257 houses	54064.25	
5	FISHERIES			
	a) Damage to boats and nets (Table 9)	4,100/ partially damaged boat	126 boats	28.866
		9,600/ fully		

		damaged boat		
		2,100/ partially damaged net	20 nets	
		2,600/ fully damaged net	696 nets	
	b) Input subsidy to fish farm (Table 10)	8200/ ha		580.7481428
6	ANIMAL HUSBANDRY			
	a) Milch animal/poultry fatality (Table 12)	30,000/ Buffalo, cow	354 animals	406.6735
		3000/ goat, pig	475 animals	
		Poultry @ 50/ bird subject to a ceiling of assistance of 5,000/ per beneficiary household.	459167 birds	
	b) Cattle shed/ poultry shed damage (Table 12)	2,100/ shed	4624 sheds	97.104
	c) Provision of feed & concentrate (Table 12)	Large Animals- 70/ day		116.5412
		Small Animals- 35/ day		
	d) Additional cost of medicines and vaccines (Table 12)	As per actuals		26
	e) Disposal of carcasses (Table 13)	5000/ large animal	1204 animals	101.9671
		1000/ small animal	1085 animals	
		30/ bird	103057 birds	
	f) Dairy development department losses (animals/ cattle shed, milk procurement loss, feed & fodder loss, society loss) (Table 14)	As per actuals		3722.41726
7	POWER			
	Electricity (cost for restoration) (Table 15)	4000/poles		10227.16
		50,000/ km of damaged conductor		
		1,00,000/ damaged distribution transformer		
8	PUBLIC WORKS DEPARTMENT			
	a) Roads (Table 16)	1,00,000/ km	3900.166	3900.166
	b) Bridges (Table 17)	In case of repairs of Bridges, assistance will be given as per the schedule of rates notified by the concerned States.	95 no.s	16449.22
9	IRRIGATION AND WATER			
	a) Irrigation schemes (Table 18)	1,50,000/damaged structure	4649 structures	6774.52
	b) Irrigation embankment (Table 18)	60,000/km		4835.76
	c) Water supply structures	1,50,000/damaged structure	745 structures	1115.5
10	RELIEF MEASURES			

	a) Temporary accommodation - Running Relief Camps (Table 19)	200/person for 20 days	3151 camps 612698 inmates	24507.92
	b) Emergency supply of drinking water in rural areas and urban areas (Table 20)	As per actuals		6.484
11	SEARCH AND RESCUE OPERATIONS			
	a) Cost of search and rescue measures/evacuation of people affected/likely to be affected (Table 22)	As per actuals		270.37
12	COMMUNITY OWNED ASSETS			
	a) Open Wells - drinking water structures (Table 23)	10,000	148763	14876.3
	b) Panchayath Schools (Table 24)	2,00,000	77	154
	c) Panchayath Anganawadis (Table 24)	2,00,000	210	420
	d) Panchayath Primary Health Centres (Table 24)	2,00,000	49	98
	e) Panchayath owned buildings (Table 24)	2,00,000	78	156
	f) Panchayath Roads (Table 24)	60,000	1110.71	666.426
	g) Municipality School (Table 25)	2,00,000	6	12
	h) Municipality Anganawadis (Table 25)	2,00,000	63	126
	i) Municipality Primary Health Centres (Table 25)	2,00,000	10	20
	j) Municipality owned buildings (Table 25)	2,00,000	14	28
	k) Municipality Roads (Table 25)	60,000	303.295	181.977
	l) Corporation School (Table 26)	2,00,000	8	16
	m) Corporation Anganawadis (Table 26)	2,00,000	10	20
	n) Corporation Primary Health Centres (Table 26)	2,00,000	2	4
	o) Corporation owned buildings (Table 26)	2,00,000	2	4
	p) Corporation Roads (Table 26)	60,000	83.475	50.085
	Total			210188.1
Two thousand one hundred and one crore eighty eight lakhs ten thousand only				

ANNEXURES

ANNEXURE 1 | Station wise monthly rainfall for the month of August 2019

Station wise monthly rainfall for the month of August 2019 (Source: IMD)						
Sl No	District Name	Station Name	Actual Rainfall (mm)	Normal Rainfall (mm)	Departure (%)	
1	Kasaragod	Hosdurg	1231.3	661.3	86	Large Excess
2		Kudulu	1157.7	658.9	76	Large Excess
3	Kannur	Kannur	926.1	581.9	59	Excess
4		Taliparamba	1132.9	610.1	86	Large Excess
5		Thalasserry	1016.1	482.3	111	Large Excess
6		Irikkur	1354.6	554.1	144	Large Excess
7	Kozhikode	Kozhikode	1009.4	457.1	121	Large Excess
8		Vadakara	2089	554	277	Large Excess
9		Quilandy	1125	521.3	116	Large Excess
10	Wayanad	Mananthavady	1253.7	521.3	140	Large Excess
11		Vythiri	1581.7	615.2	157	Large Excess
12		Ambalavayal	932.3	568.3	64	Large Excess
13		Kuppady	995.4	568.3	75	Large Excess
14	Malappuram	Nilambur	1151.9	391.8	194	Large Excess
15		Manjeri	1150.2	412	179	Large Excess
16		Perinthalmanna	1080	399.3	170	Large Excess
17		Ponnani	989.7	367.7	169	Large Excess
18		Angadippuram	1123.4	392.7	186	Large Excess
19		Karipur AP	1010.1	392.7	157	Large Excess
20	Palakkad	Palakkad	1027.8	327.1	214	Large Excess
21		Mannarkad	1145	361.7	217	Large Excess
22		Ottappalam	1574	357.4	340	Large

						Excess
23		Alathur	1099.6	306.2	259	Large Excess
24		Chittur	605.6	235.2	157	Large Excess
25		Kollengode	763.2	324.8	135	Large Excess
26		Pattambi	1090	367.4	197	Large Excess
27		Thrithala	1115	324.8	243	Large Excess
28		Parambikulam	811	324.8	150	Large Excess
29	Thrissur	Kodungallur	1191.2	467.7	155	Large Excess
30		Irinjalakuda	1035.2	467.9	121	Large Excess
31		Vadakkancherry	940.4	467.9	101	Large Excess
32		Kunnamkulam	762.8	467.9	63	Large Excess
33		Chalakydy	1380.8	472.5	192	Large Excess
34		Enamackel	1114.2	467.9	138	Large Excess
35		Vellanikkara	977.5	467.9	109	Large Excess
36	Ernakulam	Kochi AP	892.8	392.7	127	Large Excess
37		Aluva	1051	415.8	153	Large Excess
38		Piravom	761.3	398.5	91	Large Excess
39		Perumbavur	985.4	398.6	147	Large Excess
40		CIAL Kochi	1202.7	398.5	202	Large Excess
41		Ernakulam South	853	398.5	114	Large Excess
42	Alappuzha	Alappuzha	633	356.3	78	Large Excess
43		Kayamkulam	722.1	287	152	Large Excess
44		Mavelikkara	621.2	331.4	87	Large Excess
45		Cherthala	976	343.6	184	Large Excess

46		Mancompu	611.6	339.1	80	Large Excess
47		Haripad	460.6	367.3	25	Excess
48		Chengannur	634.4	349	82	Large Excess
49		CPCRI Kayamkulam	750.1	339.1	121	Large Excess
50	Kottayam	Kottayam	654.6	360	82	Large Excess
51		Vaikom	905.2	380.3	138	Large Excess
52		Kumarakom	623	375.7	66	Large Excess
53		Kozha	814.6	375.7	117	Large Excess
54		Kanjirappally	794.7	375.7	112	Large Excess
55	Idukki	Peermade	1477.1	621.1	138	Large Excess
56		Thodupuzha	962.4	590.5	63	Large Excess
57		Munnar	995.5	710.2	40	Excess
58		Idukki	884.2	590.5	50	Excess
59		Myladumpara	577.8	590.5	-2	Normal
60	Pathanamthitta	Konni	734.4	357	106	Large Excess
61		Kurudamannil	701	333.6	110	Large Excess
62	Kollam	Kollam	364	232.3	57	Excess
63		Aryankavu	571.9	260.2	120	Large Excess
64		Punalur	711.9	288.4	147	Large Excess
65	Thiruvananthapuram	Trv City	384.7	140.9	173	Large Excess
66		Trv AP	321.7	136.3	136	Large Excess
67		Nedumangad	353.8	142.8	148	Large Excess
68		Neyyattinkara	319.6	110.6	189	Large Excess
69		Varkala	247.2	189.6	30	Excess

Note: Percentage departure from normal value	
Large Excess	+60%

Excess	+20% to +59%
Above Normal	+19% to -19%
Deficient	-20% to -59%
Large Deficient	-60% or less
No rain	-100%

Annexure 2 | District wise Percentage Departure of Rainfall for the peak days (6th August to 14th August 2019)

District wise Percentage Departure of Rainfall for the peak days (6 th August to 14th August 2019)				
Source : IMD				
District	Normal Rainfall (mm)	Actual Rainfall (mm)	Percentage Departure (%)	
Kasargode	191.8	622.3	224	Large Excess
Kannur	162.8	674.6	314	Large Excess
Kozhikode	152.8	823.1	439	Large Excess
Wayanad	168.5	868.6	415	Large Excess
Malappuram	114.8	712.7	521	Large Excess
Palakkad	96.4	749.0	677	Large Excess
Thrissur	135.5	695.1	413	Large Excess
Ernakulam	119.5	649.3	443	Large Excess
Alappuzha	90.7	422.2	366	Large Excess
Kottayam	108.8	514.7	373	Large Excess
Idukki	161.4	671.2	316	Large Excess
Pathanamthitta	64.8	454.3	601	Large Excess
Kollam	63.8	332.6	421	Large Excess
Thiruvananthapuram	36.3	197	443	Large Excess
Kerala State	122.0	602.2	394	Large Excess

Annexure 3 | District Wise list of affected villages due to floods & landslides of 2019

List of villages affected due to floods & landslides of 2019				
1038 villages were notified as affected due to floods & landslides. Two districts viz. Malappuram & Wayanad were fully affected.				
District	Taluk	Affected No. of Villages	Total Number of Villages in Affected Taluks	Total Number of Taluks in the affected District
Kollam	Kunnathur	3	7	6
	Karunagapally	2	17	
	Sub Total	5	24	
Pathanamthitta	Thiruvalla	12	12	6
	Kozhencherry	4	11	
	Ranni	2	10	
	Adoor	1	14	
	Mallappally	3	9	
	Sub Total	22	56	
Alappuzha	Cherthala	9	21	6
	Kuttanad	14	14	
	Amabalappuzha	1	14	
	Chengannoor	11	11	
	Karthikapally	9	18	
	Mavelikkara	11	15	
	Sub Total	55	93	
Kottayam	Chenganashery	5	15	5
	Kanjirappally	6	13	
	Kottayam	19	26	
	Meenachil	13	28	
	Vaikom	16	18	
	Sub Total	59	100	
Idukki	Idukki	9	9	5
	Udumbanchola	6	18	
	Thodupuzha	5	17	
	Peermade	9	10	

	Devikulam	9	14	
	Sub Total	38	68	
Ernakulam	Aluva	12	20	7
	Kanayannur	7	25	
	Kochi	4	15	
	Kothamangalam	9	13	
	Kunnathunadu	9	23	
	Muvattupuzha	10	18	
	Paravur	11	13	
	Sub Total	62	127	
Thrissur	Chalakkudy	27	31	7
	Chavakkad	28	29	
	Kodungaloor	14	18	
	Kunnamkulam	11	29	
	Mukundapuram	29	29	
	Thalappally	33	45	
	Thrissur	73	74	
	Sub Total	215	255	
Palakkad	Alathur	27	30	6
	Chittur	30	30	
	Mannarkkad	24	25	
	Ottapalam	18	24	
	Palakkad	7	30	
	Pattambi	18	18	
	Sub Total	124	157	
Malappuram	Nilambur	21	21	7
	Ponnani	11	11	
	Tirurangadi	17	17	
	Tirur	30	30	
	Perinthalmanna	24	24	
	Kondotty	12	12	
	Ernad	23	23	
	Sub Total	138	138	
Kozhikode	Kozhikode	37	39	4
	Quilandy	31	31	
	Vadakara	28	28	
	Thamarasherry	19	20	
	Sub Total	115	118	
Wayanad	Mananthavady	16	16	3
	Sulthan Bathery	15	15	
	Vythiri	18	18	
	Sub Total	49	49	
Kannur	Iritty	19	19	5
	Kannur	24	28	
	Payyannur	14	22	
	Taliparamba	26	28	
	Thalassery	12	35	
	Sub Total	95	132	

Kasargode	Manjeswaram	10	48	4
	Kasargode	17	34	
	Hosdurg	19	31	
	Vellarikkundu	15	15	
	Sub Total	61	128	
	Total	1038		

Annexure 4 | Human Fatalities as on 31.08.2019

Districts	Injuries	Missing	Deaths
Thiruvananthapuram	0	0	0
Kollam	0	0	0
Pathanamthitta	0	0	0
Alappuzha	0	0	6
Kottayam	4	1	2
Idukki	5	0	5
Ernakulam	1	0	0
Thrissur	8	0	9
Palakkad	11	0	1
Malappuram	4	11	60
Kozhikode	0	0	17
Wayanad	9	5	14
Kannur	0	0	9
Kasaragod	0	0	2
Total	42	17	125

Annexure 5 | Crop damage due to South West Monsoon as on 15.08.2019

Sl. No.	Crop	Area (Ha) / No		Estimated Loss (Rs. In Lakhs)	Assistance As Per Existing Norms (Rs. In Lakhs)
1	Paddy (Nursery)	438		657.15	59.14
2	Paddy (Mainfield)	19057		28585.79	2572.72
3	Coconut(B)	270	47170	2358.50	330.19
4	Coconut-Nb	78	13607	408.21	47.62
5	Coconut Seedlings	51	8897	88.97	8.90
6	Banana-B	3832	9580687	57484.12	9580.69
7	Banana-Nb	1372	3429062	13716.25	2571.80
8	Vegetable	1863		838.22	251.47
9	Arecanut-B	813	893864	5363.18	1340.80
10	Arecanut-Nb	52	57140	228.56	57.14
11	Pepper-B	245	270047	2025.35	202.54
12	Pepper (Seedlings)	0	0	0.00	0.00
13	Coffee	21	20795	83.18	20.80
14	Rubber-T	211	105507	2110.14	316.52
15	Rubber-Nt	84	41770	626.55	83.54
16	Cashew-B	25	4431	44.31	6.65
17	Cashew-Nb	17	3030	17.32	3.03
18	Tuber Crops	394		177.37	26.80
19	Betelvine	64		158.89	47.67
20	Tapioca	1159		150.63	78.79
21	Ginger	178		177.99	12.10
22	Nutmeg-B	137	21977	769.20	87.91
23	Nutmeg-Nb	27	4352.8	108.82	6.53
23	Clove-B	4	608	12.16	1.22
25	Clove-Nb	0	0	0.00	0.00
26	Cardamom	561		392.35	100.89
27	Cocoa	18	9213	36.85	9.21
28	Turmeric	20		14.13	1.37

29	Groundnut	15		2.25	1.02
30	Sesamum	0		0.00	0.00
31	Sugarcane	6		3.60	0.81
32	Pineapple	4		2.21	0.69
33	Pulses	0		0.00	0.00
34	Millets	0		0.00	0.00
35	Jackfruit	0		0.00	0.00
36	Mango	0		0.00	0.00
37	Other Fruits (Papaya,Rambutan,Guava,Sapota Etc.)	0		0.00	0.00
38	Medicinal Plants	0		0.00	0.00
Total		31015	14512157.8	116642.24	19593.91

Annexure 6 | Agricultural losses in the districts due to South West Monsoon 2019

District	Total agricultural area affected (ha)	Total agricultural area where crop loss is >33%	Out of (4) area belonging to SMF			Assistance sought for different categories of crops (Rs. in lakhs)			Total assistance sought (Rs. In lakh)
			Rainfed	Irrigated	Perennial	Rainfed (Rs.6800 x Col.5A)	Irrigated (Rs.13500 x Col.5B)	Perennial (Rs.18000 x Col.5C)	
1	3	4	5A	5B	5C	6A	6B	6C	7 (6A+6B+6C)
Thiruvananthapuram	629.11	629.11	89.3	510.47	29.334	6.0724	68.914	5.280	80.267
Kollam	278.76	278.76	57.62	205.07	16.072	3.91816	27.684	2.893	34.495
Alappuzha	3644.13	3644.13	174.968	3341.92	127.239	11.89782	451.159	22.903	485.960
Pathanamthitta	335.89	335.89	40.57	272.31	23.011	2.75876	36.762	4.142	43.663
Kttayam	2862.05	2862.05	106.5	2650.53	105.014	7.242	357.822	18.902	383.967
Idukki	999.28	999.28	54.9	315.72	628.659	3.7332	42.622	113.159	159.514
Ernakulam	1294.21	1294.21	293.44	869.48	131.293	19.95392	117.380	23.633	160.966
Thrissur	2653.42	2653.42	25.4	1859.12	768.895	1.7272	250.981	138.401	391.110
Palakkad	10885.86	10885.86	259.39	10457.11	169.364	17.63852	1411.709	30.485	1459.833
Malappuram	1611.30	1611.30	347.73	1108.14	155.430	23.64564	149.599	27.977	201.222
Kozhikode	274.80	274.80	17.3	180.43	77.077	1.1764	24.358	13.874	39.408
Wayanad	3661.18	3661.18	277	3213.55	170.630	18.836	433.829	30.713	483.379
Kannur	1496.37	1496.37	20.316	1301.30	174.756	1.381488	175.676	31.456	208.513
Kasargode	388.26	388.26	1.6	282.75	103.911	0.1088	38.171	18.704	56.984
Total	31014.62	31014.62	1766.034	26567.9	2680.684	120.0903	3586.667	482.523	4189.281

Annexure 7 | Damages Assessment of Fisheries Sector- Boats and Nets

District	Fully damaged boats		Partially damaged boats		Fully damaged nets		Partially damaged nets		Total cost as per norms (in Lakhs)
	Number	Cost @ Rs. 9600/ boat	Number	Cost @ Rs. 4100/ boat	Number	Cost @ Rs. 2600/ net	Number	Cost @ Rs. 2100/ net	
Trivandrum	6	57600	1	4100	2	5200	1	2100	0.69
Kollam	3	28800	3	12300	3	7800	0	0	0.489
Pathanamthitta	1	9600	0	0	86	223600	0	0	2.332
Kottayam	0	0	0	0	5	13000	0	0	0.13
Alappuzha	21	201600	47	192700	412	1071200	2	4200	14.697
Ernakulam	0	0	1	4100	2	5200	0	0	0.093
Thrissur	0	0	1	4100	5	13000	0	0	0.171
Idukki	0	0	0	0	0	0	15	31500	0.315
Palakkad	6	57600	10	41000	125	325000	0	0	4.236
Malappuram	17	163200	9	36900	9	23400	0	0	2.235
Kozhikode	0	0	25	102500	3	7800	2	4200	1.145
Kannur	0	0	28	114800	44	114400	0	0	2.292
Kasargode	0	0	1	4100	0	0	0	0	0.041
TOTAL	54	518400	126	516600	696	1809600	20	42000	28.866

Annexure 8 | Damage Assessment in Animal Husbandry Sector

District		Milch animal/Poultry				Cattle Shed/ Poultry Shed [Rs.2,100/- per shed]	Total assistance (in Rs.)
		Buffalo/ cow/ Camel	Sheep/Goat	Calf	Poultry		
Trivandrum	Number	0	0	0	0	5	
	Amount (Rs.)	0	0	0	0	10500	10500
Kollam	Number	3	1	1	35	79	
	Amount (Rs.)	90000	3000	16000	1750	165900	276650
Pathanamthitta	Number	13	11	17	464	81	
	Amount (Rs.)	390000	33000	272000	23200	170100	888300
Idukki	Number	10	2	8	1137	59	
	Amount (Rs.)	300000	6000	128000	56850	123900	614750
Kottayam	Number	23	30	29	2289	97	
	Amount (Rs.)	690000	90000	464000	114450	203700	1562150
Alappuzha	Number	28	32	61	3623	408	
	Amount (Rs.)	840000	96000	976000	181150	856800	2949950
Ernakulam	Number	24	45	37	13311	84	
	Amount (Rs.)	720000	135000	592000	665550	176400	2288950
Thrissur	Number	20	67	53	91996	208	
	Amount (Rs.)	600000	201000	848000	4599800	436800	6685600
Palakkad	Number	69	36	35	10579	673	

	Amount (Rs.)	2070000	108000	560000	528950	1413300	4680250
Malapuram	Number	82	82	57	282745	1055	
	Amount (Rs.)	2460000	246000	912000	14137250	2215500	19970750
Kozhikode	Number	29	47	20	22104	895	
	Amount (Rs.)	870000	141000	320000	1105200	1879500	4315700
Wayanad	Number	23	27	22	3575	413	
	Amount (Rs.)	690000	81000	352000	178750	867300	2169050
Kannur	Number	29	94	11	27169	388	
	Amount (Rs.)	870000	282000	176000	1358450	814800	35,01,250
Kasargod	Number	1	1	3	140	179	
	Amount (Rs.)	30000	3000	48000	7000	375900	463900
TOTAL	Number	354	475	354	459167	4624	
	Amount (Rs.)	1,06,20,000	1425000	5664000	22958350	9710400	50377750

Milch animals

Rs. 30000/- Buffalo/ cow/ camel/yak etc.

Rs. 3000/- Sheep/Goat

Draught animals -

Rs. 25000/- Camel/ horse/ bullock, etc.

Rs. 16,000/- Calf/ Donkey/ Pony/ Mule

Poultry @ 50/- per bird subject to a ceiling of assistance of Rs. 5,000/- per beneficiary household.

Annexure 9 | District wise list for provision of fodder/feed concentrate

District	Total number of animals fed	Cost (in Rs.)
Ptn	619	303310
Alp	1571	769790
Ktm	476	233240
Idu	4761	2332890
Ekm	952	466480
Tsr	714	349860
Mlp	2619	1283310
Koz	1762	863380
Kan	619	303310
Sub Total	14093	69,05,570
Mineral Mixture Supplied	22480 kg	2472800
TMR block	5885 bags	2275750
GRAND TOTAL		Rs. 116,54,120

Large animals- Rs. 70/- per day

Small animals- Rs. 35/- per day

Annexure 10 | Damage Assessment in Power Sector

District	Number of Transformers damaged	Cost of transformers @1 lakh/ transformer (Rs. in Lakhs)	Number of Poles damaged	Cost of poles @4000/pole (Rs. in Lakhs)	Length of conductor damaged in km	Cost of conductor @50000/km (Rs. in Lakhs)	Total amount incurred (Rs. in Lakhs)
Thiruvananthapuram	9	9.00	1211	48.44	1177.20	588.60	646.04
Kollam	11	11.00	973	38.92	833.80	416.90	466.82
Pathanamthitta	16	16.00	1263	50.52	468.40	234.20	300.72
Kottayam	67	67.00	1695	67.80	1029.40	514.70	649.50
Alappuzha	10	10.00	918	36.72	459.20	229.60	276.32
Ernakulam	32	32.00	1585	63.40	1327.20	663.60	759.00
Idukki	12	12.00	3161	126.44	643.40	321.70	460.14
Trissur	35	35.00	2022	80.88	1527.00	763.50	879.38
Palakkad	14	14.00	3882	155.28	2212.60	1106.30	1275.58
Malappuram	121	121.00	3670	146.80	2365.40	1182.70	1450.50
Kozhikode	23	23.00	3808	152.32	2678.80	1339.40	1514.72
Wayanad	20	20.00	1327	53.08	336.00	168.00	241.08
Kannur	38	38.00	3695	147.80	1159.60	579.80	765.60
Kasargode	37	37.00	1919	76.76	856.00	428.00	541.76
Total	445	445.00	31129	1245.16	17074.00	8537	10227.16

Annexure 11 | Damage assessment of water supply structures

District	Number of Structures damaged	Estimated Cost of Repairs @ Rs. 1.5 lakhs/structure (Rs. in Lakhs)
Trivandrum	10	15
Kollam	4	6
Pathanamthitta	19	28.5
Idukki	30	45
Kottayam	60	90
Alappuzha	25	37.5
Ernakulam	105	157.5
ThIrssur	108	162
Palakkad	131	196.5
Malapuram	122	183
Kozhikode	57	85.5
Wayanad	48	72
Kannur	19	28.5
Kasargod	7	10.5
TOTAL	745	1117.5

Annexure 12 | District wise peak number of camps and families

Districts	No Of Camps	No Of Families	No Of Persons
Thiruvananthapuram	8	160	666
Kollam	5	483	1249
Pathanamthitta	97	2672	9272
Alappuzha	132	8898	28561
Kottayam	181	7624	23968
Idukki	20	259	734
Ernakulam	132	6837	23686
Thrissur	257	16050	48523
Palakkad	81	2335	8269
Malappuram	240	16500	59351
Kozhikode	317	18825	60343
Wayanad	214	10077	35878
Kannur	137	5510	21981
Kasaragod	31	1179	3936
Total	1852	97409	326417

Annexure 13 | List of Villages affected by floods and landslide

Flood / Landslide Affected Districts of Kerala in 2019			
SI No	DISTRICT	TALUK	VILLAGE
1	Kollam	Kunnathur	Sooranad North
2	Kollam	Kunnathur	Sooranad South
3	Kollam	Kunnathur	West Kallada
4	Kollam	Karunagapally	Pavumba
5	Kollam	Karunagapally	Thodiyoor
6	Pathanamthitta	Thiruvalla	Niranam
7	Pathanamthitta	Thiruvalla	Kadappa
8	Pathanamthitta	Thiruvalla	Nedumpram
9	Pathanamthitta	Thiruvalla	Peringara
10	Pathanamthitta	Thiruvalla	Thiruvalla
11	Pathanamthitta	Thiruvalla	Kuttappuzha
12	Pathanamthitta	Thiruvalla	Kuttoor
13	Pathanamthitta	Thiruvalla	Kaviyoor
14	Pathanamthitta	Thiruvalla	Eraviperoor
15	Pathanamthitta	Thiruvalla	Koipram
16	Pathanamthitta	Thiruvalla	Thottapuzhassery
17	Pathanamthitta	Thiruvalla	Kavumbhagam
18	Pathanamthitta	Kozhenchery	Kidangannur
19	Pathanamthitta	Kozhenchery	Aranmula
20	Pathanamthitta	Kozhenchery	Mallappuzhassery
21	Pathanamthitta	Kozhenchery	Kozhenchery
22	Pathanamthitta	Ranni	Kollamula
23	Pathanamthitta	Ranni	Perunad
24	Pathanamthitta	Adoor	Pandalam
25	Pathanamthitta	Mallappally	Puramattom
26	Pathanamthitta	Mallappally	Kallooppara
27	Pathanamthitta	Mallappally	Mallappally
28	Alappuzha	Ambalapuzha	Mullakkal
29	Alappuzha	Chengannur	Thiruvanvandoor
30	Alappuzha	Chengannur	Chengannur
31	Alappuzha	Chengannur	Pandanad
32	Alappuzha	Chengannur	Kurattissery
33	Alappuzha	Chengannur	Ennakkad
34	Alappuzha	Chengannur	Mannar
35	Alappuzha	Chengannur	Mulakuzha
36	Alappuzha	Chengannur	Puliyoor

37	Alappuzha	Chengannur	Bhudhanoor
38	Alappuzha	Chengannur	Cheriyamad
39	Alappuzha	Chengannur	Venmony
40	Alappuzha	Cherthala	Aroor
41	Alappuzha	Cherthala	Panavally
42	Alappuzha	Cherthala	Thuravoor South
43	Alappuzha	Cherthala	Pattanakkad
44	Alappuzha	Cherthala	Kadakkappally
45	Alappuzha	Cherthala	Kokkothamangalam
46	Alappuzha	Cherthala	Cherthala North
47	Alappuzha	Cherthala	Mararikkulam North
48	Alappuzha	Cherthala	Arthunkal
49	Alappuzha	Karthikapally	Cheruthana
50	Alappuzha	Karthikapally	Karuvatta
51	Alappuzha	Karthikapally	Veeyapuram
52	Alappuzha	Karthikapally	Haripad
53	Alappuzha	Karthikapally	Kumarapuram
54	Alappuzha	Karthikapally	Pallippad
55	Alappuzha	Karthikapally	Cheppad
56	Alappuzha	Karthikapally	Kayamkulam
57	Alappuzha	Karthikapally	Krishnapuram
58	Alappuzha	Kuttanad	Kainakary North
59	Alappuzha	Kuttanad	Kavalam
60	Alappuzha	Kuttanad	Pulinkunnu
61	Alappuzha	Kuttanad	Kunnumma
62	Alappuzha	Kuttanad	Neelamperoor
63	Alappuzha	Kuttanad	Kainakary South
64	Alappuzha	Kuttanad	Veliyanad
65	Alappuzha	Kuttanad	Nedumudi
66	Alappuzha	Kuttanad	Champakkulam
67	Alappuzha	Kuttanad	Ramankary
68	Alappuzha	Kuttanad	Muttar
69	Alappuzha	Kuttanad	Edathua
70	Alappuzha	Kuttanad	Thakazhy
71	Alappuzha	Kuttanad	Thalavady
72	Alappuzha	Mavelikara	Tripperunthura
73	Alappuzha	Mavelikara	Chennithala
74	Alappuzha	Mavelikara	Thazhakara
75	Alappuzha	Mavelikara	Kannamangalam
76	Alappuzha	Mavelikara	Mavelikara
77	Alappuzha	Mavelikara	Vettiyar

78	Alappuzha	Mavelikara	Noornad
79	Alappuzha	Mavelikara	Thekkekara
80	Alappuzha	Mavelikara	Perungala
81	Alappuzha	Mavelikara	Thamarakkulam
82	Alappuzha	Mavelikara	Vallikunnam
83	Kottayam	Changanassery	Kurichy
84	Kottayam	Changanassery	Vazhappally West
85	Kottayam	Changanassery	Chettipuzha
86	Kottayam	Changanassery	Vazhappally East
87	Kottayam	Changanassery	Changanassery
88	Kottayam	Kanjirapally	Koottickal
89	Kottayam	Kanjirapally	Mundakayam
90	Kottayam	Kanjirapally	Edakkunnam
91	Kottayam	Kanjirapally	Erumeli South
92	Kottayam	Kanjirapally	Cheruvally
93	Kottayam	Kanjirapally	Koruthodu
94	Kottayam	Kottayam	Ettumanoor
95	Kottayam	Kottayam	Athirampuzha
96	Kottayam	Kottayam	Kaipuzha
97	Kottayam	Kottayam	Ayarkunnam
98	Kottayam	Kottayam	Peroor
99	Kottayam	Kottayam	Arpookara
100	Kottayam	Kottayam	Manarcad
101	Kottayam	Kottayam	Perumbaikad
102	Kottayam	Kottayam	Kumarakam
103	Kottayam	Kottayam	Muttampalam
104	Kottayam	Kottayam	Chengalam
105	Kottayam	Kottayam	Kottayam
106	Kottayam	Kottayam	Aymanam
107	Kottayam	Kottayam	Thiruvarpu
108	Kottayam	Kottayam	Velloor
109	Kottayam	Kottayam	Nattakam
110	Kottayam	Kottayam	Puthuppally
111	Kottayam	Kottayam	Panachikkad
112	Kottayam	Kottayam	Vijayapuram
113	Kottayam	Meenachil	Vellilappally
114	Kottayam	Meenachil	Bharananganam
115	Kottayam	Meenachil	Lalam
116	Kottayam	Meenachil	Thalappalam
117	Kottayam	Meenachil	Puliyannoor
118	Kottayam	Meenachil	Teekoy

119	Kottayam	Meenachil	Kidangoor
120	Kottayam	Meenachil	Erattupetta
121	Kottayam	Meenachil	Meenachil
122	Kottayam	Meenachil	Poovary
123	Kottayam	Meenachil	Kondoor
124	Kottayam	Meenachil	Poonjar Thekkekara
125	Kottayam	Meenachil	Thalanadu
126	Kottayam	Vaikom	Chempu
127	Kottayam	Vaikom	Kaduthuruthy
128	Kottayam	Vaikom	Kallara
129	Kottayam	Vaikom	Kulasekharamangalam
130	Kottayam	Vaikom	Mulakulam
131	Kottayam	Vaikom	Muttuchira
132	Kottayam	Vaikom	Naduvile
133	Kottayam	Vaikom	Thalayazham
134	Kottayam	Vaikom	TV Puram
135	Kottayam	Vaikom	Udayanapuram
136	Kottayam	Vaikom	Vadakkemuri
137	Kottayam	Vaikom	Vadayar
138	Kottayam	Vaikom	Vaikom
139	Kottayam	Vaikom	Vechoor
140	Kottayam	Vaikom	Velloor
141	Kottayam	Vaikom	Manjoor
142	Idukki	Udumbanchola	Anavilasam
143	Idukki	Udumbanchola	Bison Valley
144	Idukki	Udumbanchola	Kalkoonthal
145	Idukki	Udumbanchola	Karunapuram
146	Idukki	Udumbanchola	Pampadumpara
147	Idukki	Udumbanchola	Chinnkanal
148	Idukki	Idukki	Idukki
149	Idukki	Idukki	Kattappanan
150	Idukki	Idukki	Kanjikkuzhy
151	Idukki	Idukki	Kanchiyar
152	Idukki	Idukki	Vathikkudy
153	Idukki	Idukki	Ayyappancoil
154	Idukki	Idukki	Upputhodu
155	Idukki	Idukki	Konnathady
156	Idukki	Idukki	Thankamani
157	Idukki	Thodupuzha	Kodikkulam
158	Idukki	Thodupuzha	Muttom
159	Idukki	Thodupuzha	Arakkulam

160	Idukki	Thodupuzha	Elappally
161	Idukki	Thodupuzha	Velliyamattom
162	Idukki	Peermade	Kumali
163	Idukki	Peermade	Elappara
164	Idukki	Peermade	Manjumala
165	Idukki	Peermade	Upputhara
166	Idukki	Peermade	Vagomon
167	Idukki	Peermade	Peermade
168	Idukki	Peermade	Kokkayar
169	Idukki	Peermade	Periyar
170	Idukki	Peermade	Peruvanthanam
171	Idukki	Devikulam	Munnar
172	Idukki	Devikulam	Mankulam
173	Idukki	Devikulam	Mannankandam
174	Idukki	Devikulam	Vattavada
175	Idukki	Devikulam	Kannan Devan Hills
176	Idukki	Devikulam	Pallivasal
177	Idukki	Devikulam	Kottakamboor
178	Idukki	Devikulam	Anaviratti
179	Idukki	Devikulam	Kunjithanni
180	Ernakulam	Aluva	Manjarapra
181	Ernakulam	Aluva	Parakkadavu
182	Ernakulam	Aluva	Angamaly
183	Ernakulam	Aluva	Malayattoor
184	Ernakulam	Aluva	Mattoor
185	Ernakulam	Aluva	Nedumbassery
186	Ernakulam	Aluva	Vadakkumbhagom
187	Ernakulam	Aluva	Keezhumadu
188	Ernakulam	Aluva	Choornikkara
189	Ernakulam	Aluva	Chengamanad
190	Ernakulam	Aluva	Chowwara
191	Ernakulam	Aluva	Aluva East
192	Ernakulam	Kanayannur	Thrikkakara North
193	Ernakulam	Kanayannur	Cheranallur
194	Ernakulam	Kanayannur	Edapally North
195	Ernakulam	Kanayannur	Vazhakkala
196	Ernakulam	Kanayannur	Edapally South
197	Ernakulam	Kanayannur	Elamkulam
198	Ernakulam	Kanayannur	Nadama
199	Ernakulam	Kochi	Edavanakkad
200	Ernakulam	Kochi	Nayarambalam
201	Ernakulam	Kochi	Njarackal

202	Ernakulam	Kochi	Elamkunnappuzha
203	Ernakulam	Kothamangalam	Pindimana
204	Ernakulam	Kothamangalam	Kottappady
205	Ernakulam	Kothamangalam	Thrikkariyoor
206	Ernakulam	Kothamangalam	Kothamangalam
207	Ernakulam	Kothamangalam	Kuttamangalam
208	Ernakulam	Kothamangalam	Varappetty
209	Ernakulam	Kothamangalam	Kadavoor
210	Ernakulam	Kothamangalam	Pallarimangalam
211	Ernakulam	Kothamangalam	Kuttanpuzha
212	Ernakulam	Kunnathunad	Kombanad
213	Ernakulam	Kunnathunad	Koovappady
214	Ernakulam	Kunnathunad	Vengoor West
215	Ernakulam	Kunnathunad	Chelamattom
216	Ernakulam	Kunnathunad	Perumbavoor
217	Ernakulam	Kunnathunad	Vengola
218	Ernakulam	Kunnathunad	Mazhuvannoor
219	Ernakulam	Kunnathunad	Aikaranad North
220	Ernakulam	Kunnathunad	Aikaranad South
221	Ernakulam	Muvattupuzha	Enanalloor
222	Ernakulam	Muvattupuzha	Velloorkunnam
223	Ernakulam	Muvattupuzha	Valakam
224	Ernakulam	Muvattupuzha	Muvattupuzha
225	Ernakulam	Muvattupuzha	Marady
226	Ernakulam	Muvattupuzha	Memury
227	Ernakulam	Muvattupuzha	Manjalloor
228	Ernakulam	Muvattupuzha	Ramamangalam
229	Ernakulam	Muvattupuzha	Thirumarady
230	Ernakulam	Muvattupuzha	Piravom
231	Ernakulam	Paravur	Puthenvelikkara
232	Ernakulam	Paravur	Chendamangalam
233	Ernakulam	Paravur	Moothakunnam
234	Ernakulam	Paravur	Kunnukara
235	Ernakulam	Paravur	Paravur
236	Ernakulam	Paravur	Karumalloor
237	Ernakulam	Paravur	Kottuvally
238	Ernakulam	Paravur	Alangad
239	Ernakulam	Paravur	Kadungalloor
240	Ernakulam	Paravur	Varappuzha
241	Ernakulam	Paravur	Eloor
242	Thrissur	Chalakkudy	Pariyaram

243	Thrissur	Chalakkudy	Alathur
244	Thrissur	Chalakkudy	Aloor
245	Thrissur	Chalakkudy	Annallur
246	Thrissur	Chalakkudy	Elinjipra
247	Thrissur	Chalakkudy	Kakulissery
248	Thrissur	Chalakkudy	Kallur Thekkummuri
249	Thrissur	Chalakkudy	Kizhake Chalakudi
250	Thrissur	Chalakkudy	Kizhakkummuri
251	Thrissur	Chalakkudy	Kodakara
252	Thrissur	Chalakkudy	Kodassery
253	Thrissur	Chalakkudy	Kuruvilassery
254	Thrissur	Chalakkudy	Kuttichira
255	Thrissur	Chalakkudy	Mattathur
256	Thrissur	Chalakkudy	Melur
257	Thrissur	Chalakkudy	Mupliyam
258	Thrissur	Chalakkudy	Muringur Thekkummuri
259	Thrissur	Chalakkudy	Muringur Vadakkummuri (CT)
260	Thrissur	Chalakkudy	Padinjare Chalakkudy
261	Thrissur	Chalakkudy	Perambra
262	Thrissur	Chalakkudy	Potta
263	Thrissur	Chalakkudy	Thirumukkulam
264	Thrissur	Chalakkudy	Vadama
265	Thrissur	Chalakkudy	Varandarappilly
266	Thrissur	Chalakkudy	Vadakkumbhagam
267	Thrissur	Chalakkudy	Kadukutty
268	Thrissur	Chalakkudy	Nadhippulam
269	Thrissur	Chavakkad	Annakkara
270	Thrissur	Chavakkad	Brahmakulam
271	Thrissur	Chavakkad	Chavakkad
272	Thrissur	Chavakkad	Edakkazhiyur
273	Thrissur	Chavakkad	Elavally
274	Thrissur	Chavakkad	Engandiyur
275	Thrissur	Chavakkad	Irimbranellur
276	Thrissur	Chavakkad	Iringapram
277	Thrissur	Chavakkad	Kadappuram
278	Thrissur	Chavakkad	Kadikkad
279	Thrissur	Chavakkad	Kundaliyur

280	Thrissur	Chavakkad	Manathala
281	Thrissur	Chavakkad	Mullassery
282	Thrissur	Chavakkad	Nattika
283	Thrissur	Chavakkad	Orumanayur
284	Thrissur	Chavakkad	Pavaratty
285	Thrissur	Chavakkad	Perakam
286	Thrissur	Chavakkad	Pookode
287	Thrissur	Chavakkad	Punnayur
288	Thrissur	Chavakkad	Punnayurkulam
289	Thrissur	Chavakkad	Talikkulam
290	Thrissur	Chavakkad	Thaikkad
291	Thrissur	Chavakkad	Vadakkedak
292	Thrissur	Chavakkad	Vadanappally
293	Thrissur	Chavakkad	Valappad
294	Thrissur	Chavakkad	Venkitangu
295	Thrissur	Chavakkad	Venmanad
296	Thrissur	Chavakkad	Vylathur
297	Thrissur	Kodungaloor	Azhikode
298	Thrissur	Kodungaloor	Edathiruthy
299	Thrissur	Kodungaloor	Edavilangu
300	Thrissur	Kodungaloor	Eriyad
301	Thrissur	Kodungaloor	Kaipamangalam
302	Thrissur	Kodungaloor	Lokamaleswaram
303	Thrissur	Kodungaloor	Methala
304	Thrissur	Kodungaloor	Padinjare Vemballur
305	Thrissur	Kodungaloor	Pappinivattom
306	Thrissur	Kodungaloor	Perinjanam
307	Thrissur	Kodungaloor	Poyya
308	Thrissur	Kodungaloor	Pullut
309	Thrissur	Kodungaloor	S N Puram
310	Thrissur	Kodungaloor	Koolimuttam
311	Thrissur	Kunnamkulam	Porkulam
312	Thrissur	Kunnamkulam	Kariyannur
313	Thrissur	Kunnamkulam	chowannur
314	Thrissur	Kunnamkulam	Kanippayur
315	Thrissur	Kunnamkulam	Kandanassery
316	Thrissur	Kunnamkulam	Choondal
317	Thrissur	Kunnamkulam	Aloor
318	Thrissur	Kunnamkulam	Anjur
319	Thrissur	Kunnamkulam	Arthat
320	Thrissur	Kunnamkulam	Pazhanji
321	Thrissur	Kunnamkulam	chiranellur

322	Thrissur	Mukundapuram	Amballur
323	Thrissur	Mukundapuram	Anandapuram
324	Thrissur	Mukundapuram	Chengallur
325	Thrissur	Mukundapuram	Edathirinji
326	Thrissur	Mukundapuram	Irinjalakuda
327	Thrissur	Mukundapuram	Kaduppasery
328	Thrissur	Mukundapuram	Kallur
329	Thrissur	Mukundapuram	Karalam
330	Thrissur	Mukundapuram	Karumathra
331	Thrissur	Mukundapuram	Kattur
332	Thrissur	Mukundapuram	Kottanellur
333	Thrissur	Mukundapuram	Madayikonam
334	Thrissur	Mukundapuram	Manavalassery
335	Thrissur	Mukundapuram	Muriyad
336	Thrissur	Mukundapuram	Nenmanikkara
337	Thrissur	Mukundapuram	Nellai
338	Thrissur	Mukundapuram	Padiyur
339	Thrissur	Mukundapuram	Parappukkara
340	Thrissur	Mukundapuram	Poomangalam
341	Thrissur	Mukundapuram	Porathissery
342	Thrissur	Mukundapuram	Pullur

343	Thrissur	Mukundapuram	Puthenchira
344	Thrissur	Mukundapuram	Thekkumkara
345	Thrissur	Mukundapuram	Thoravu
346	Thrissur	Mukundapuram	Thottippal
347	Thrissur	Mukundapuram	Trikkur
348	Thrissur	Mukundapuram	Vadakkumkara
349	Thrissur	Mukundapuram	Vallivattom
350	Thrissur	Mukundapuram	Vellukkara
351	Thrissur	Thalappally	Attur
352	Thrissur	Thalappally	Chelakkode
353	Thrissur	Thalappally	Chelakkara
354	Thrissur	Thalappally	Cheruthuruthi
355	Thrissur	Thalappally	Chittanda
356	Thrissur	Thalappally	Desamangalam
357	Thrissur	Thalappally	Elanad
358	Thrissur	Thalappally	Enkakkad
359	Thrissur	Thalappally	Kaniyarkode
360	Thrissur	Thalappally	Killimangalam
361	Thrissur	Thalappally	Kondazhy
362	Thrissur	Thalappally	Kottappuram
363	Thrissur	Thalappally	Kumaranellur
364	Thrissur	Thalappally	Kurumala
365	Thrissur	Thalappally	Maayannur
366	Thrissur	Thalappally	Mullurkara
367	Thrissur	Thalappally	Nedumpura
368	Thrissur	Thalappally	Paimkulam
369	Thrissur	Thalappally	Pallur
370	Thrissur	Thalappally	Pampady
371	Thrissur	Thalappally	Pangarappilly
372	Thrissur	Thalappally	Panjal
373	Thrissur	Thalappally	Parlikad
374	Thrissur	Thalappally	Pazhayanur
375	Thrissur	Thalappally	Pilakkode
376	Thrissur	Thalappally	Thichur

377	Thrissur	Thalappally	Thiruvilwamala
378	Thrissur	Thalappally	Thonnurkara
379	Thrissur	Thalappally	Vadakkethara
380	Thrissur	Thalappally	Varavoor
381	Thrissur	Thalappally	Venganellur
382	Thrissur	Thalappally	Vennur
383	Thrissur	Thalappally	Wadakkanchery
384	Thrissur	Thrissur	Adat
385	Thrissur	Thrissur	Alappad
386	Thrissur	Thrissur	Anjur
387	Thrissur	Thrissur	Anthicad
388	Thrissur	Thrissur	Aranattukara
389	Thrissur	Thrissur	Arattupuzha
390	Thrissur	Thrissur	Avanur
391	Thrissur	Thrissur	Avinissery
392	Thrissur	Thrissur	Ayyandhol
393	Thrissur	Thrissur	Chalakkal
394	Thrissur	Thrissur	Chazhoor
395	Thrissur	Thrissur	Chembukavu
396	Thrissur	Thrissur	Cherpu
397	Thrissur	Thrissur	Chevvoor
398	Thrissur	Thrissur	Chittilappilly
399	Thrissur	Thrissur	Chiyaram
400	Thrissur	Thrissur	Edakkalathur
401	Thrissur	Thrissur	Edakkanni
402	Thrissur	Thrissur	Eravu
403	Thrissur	Thrissur	Inchamudi
404	Thrissur	Thrissur	Kainoor
405	Thrissur	Thrissur	Kaiparamba
406	Thrissur	Thrissur	Kanimangalam
407	Thrissur	Thrissur	Karamuck
408	Thrissur	Thrissur	Killannur
409	Thrissur	Thrissur	Kizhakkummuri
410	Thrissur	Thrissur	Kizhuppillikkara
411	Thrissur	Thrissur	Kodannur
412	Thrissur	Thrissur	Kolazhy
413	Thrissur	Thrissur	Koorkkanchery
414	Thrissur	Thrissur	Kozhukkully
415	Thrissur	Thrissur	Kurichikkara
416	Thrissur	Thrissur	Kurunpilavu
417	Thrissur	Thrissur	Kuttoor

418	Thrissur	Thrissur	Madakkathara
419	Thrissur	Thrissur	Manakkodi
420	Thrissur	Thrissur	Manalur
421	Thrissur	Thrissur	Mannamangalam
422	Thrissur	Thrissur	Marathakkara
423	Thrissur	Thrissur	Mulayam
424	Thrissur	Thrissur	Nadathara
425	Thrissur	Thrissur	Nettissery
426	Thrissur	Thrissur	Ollukkara
427	Thrissur	Thrissur	Ollur
428	Thrissur	Thrissur	Oorakam
429	Thrissur	Thrissur	Padiyam
430	Thrissur	Thrissur	Palissery
431	Thrissur	Thrissur	Pallippuram
432	Thrissur	Thrissur	Pananchery
433	Thrissur	Thrissur	Parakkad
434	Thrissur	Thrissur	Paralam
435	Thrissur	Thrissur	Peechi
436	Thrissur	Thrissur	Peramangalam
437	Thrissur	Thrissur	Peringavu
438	Thrissur	Thrissur	Punkunnam
439	Thrissur	Thrissur	Pottore
440	Thrissur	Thrissur	Pullazhi
441	Thrissur	Thrissur	Pullu
442	Thrissur	Thrissur	Puranattukara
443	Thrissur	Thrissur	Puthur
444	Thrissur	Thrissur	Puzhakkal
445	Thrissur	Thrissur	Thangalur
446	Thrissur	Thrissur	Thanniyam
447	Thrissur	Thrissur	Tholur
448	Thrissur	Thrissur	Thrissur
449	Thrissur	Thrissur	Vadakkummuri
450	Thrissur	Thrissur	Vallachira
451	Thrissur	Thrissur	Velappaya
452	Thrissur	Thrissur	Vellanikkara
453	Thrissur	Thrissur	Veluthur
454	Thrissur	Thrissur	Venginissery
455	Thrissur	Thrissur	Vilvattam
456	Thrissur	Thrissur	Viyyur
457	Palakkad	Alathur	Erimayoor 1
458	Palakkad	Alathur	Erimayoor 2

459	Palakkad	Alathur	Kannambra 1
460	Palakkad	Alathur	Kannambra 2
461	Palakkad	Alathur	Kavassery 1
462	Palakkad	Alathur	Kavassery 2
463	Palakkad	Alathur	Kizhakkanchery 1
464	Palakkad	Alathur	Kizhakkanchery 2
465	Palakkad	Alathur	Kottayi 1
466	Palakkad	Alathur	Kottayi 2
467	Palakkad	Alathur	Kuthanur 2
468	Palakkad	Alathur	Kuzhalmandam 1
469	Palakkad	alathur	Kuzhalmandam 2
470	Palakkad	Alathur	Mangalam Dam
471	Palakkad	Alathur	Mathoor 1
472	Palakkad	Alathur	Mathoor 2
473	Palakkad	Alathur	Melarkodu
474	Palakkad	Alathur	Peringottukurrissi 1
475	Palakkad	Alathur	Puthukkodu
476	Palakkad	Alathur	Tarur 1
477	Palakkad	Alathur	Tarur 2
478	Palakkad	Alathur	Thenkurrissi 1
479	Palakkad	Alathur	Thenkurrissi 2
480	Palakkad	Alathur	Vadakkanchery1
481	Palakkad	Alathur	Vadakkanchery2
482	Palakkad	Alathur	Vandaazhi 1
483	Palakkad	Alathur	Vandazhi 2
484	Palakkad	Chittur	Ayiloor
485	Palakkad	Chittur	Chittur
486	Palakkad	Chittur	Elavanchery
487	Palakkad	Chittur	Eruthembathy
488	Palakkad	Chittur	Kayaradi
489	Palakkad	Chittur	Koduvayoor 1
490	Palakkad	Chittur	Koduvayoor 2
491	Palakkad	Chittur	Kollamkodu 1
492	Palakkad	Chittur	Kollankodu 2
493	Palakkad	Chittur	Kozhinjampara
494	Palakkad	Chittur	Kozhippathy
495	Palakkad	Chittur	Moolathara
496	Palakkad	Chittur	Muthalamad 2
497	Palakkad	Chittur	Muthalamada 1
498	Palakkad	Chittur	Nalleppilli
499	Palakkad	Chittur	Nelliyambathy

500	Palakkad	Chittur	Nenmara
501	Palakkad	Chittur	Ozhalappathy
502	Palakkad	Chittur	Pallassena
503	Palakkad	Chittur	Pattanchery
504	Palakkad	Chittur	Perumaatti
505	Palakkad	Chittur	Puthunagaram
506	Palakkad	Chittur	Thathamangalam
507	Palakkad	Chittur	Thekkedesham
508	Palakkad	Chittur	Thiruvazhiyodu
509	Palakkad	Chittur	Vadakarappathy
510	Palakkad	Chittur	Vadavannoor
511	Palakkad	Chittur	Valiyavallampathy
512	Palakkad	Chittur	Vallanki
513	Palakkad	Chittur	Vandithavalam
514	Palakkad	Mannarkadu	Agali
515	Palakkad	Mannarkadu	Alanalloor 1
516	Palakkad	Mannarkadu	Alanalloor 2
517	Palakkad	Mannarkadu	Alanalloor 3
518	Palakkad	Mannarkadu	Thachampara
519	Palakkad	Mannarkadu	Kallamala
520	Palakkad	Mannarkadu	Karakkurissi
521	Palakkad	Mannarkadu	Karimba 1
522	Palakkad	Mannarkadu	Karimba 2
523	Palakkad	Mannarkadu	Kottathara
524	Palakkad	Mannarkadu	Kottopadam 1
525	Palakkad	Mannarkadu	Kottopadam 2
526	Palakkad	Mannarkadu	Kottopadam3
527	Palakkad	Mannarkadu	Kumaramputhoor
528	Palakkad	Mannarkadu	Mannarkad 2
529	Palakkad	Mannarkadu	Padavayal
530	Palakkad	Mannarkadu	Palakkayam
531	Palakkad	Mannarkadu	Payyanedam
532	Palakkad	Mannarkadu	Pottassery 1
533	Palakkad	Mannarkadu	Pottassery 2
534	Palakkad	Mannarkadu	Puthoor
535	Palakkad	Mannarkadu	Sholayoor
536	Palakkad	Mannarkadu	Thachanattukara 2
537	Palakkad	Mannarkadu	Thachannattukara 1
538	Palakkad	Ottappalam	Ambalappara 1
539	Palakkad	Ottappalam	Ambalappara 2
540	Palakkad	Ottappalam	Ananganadi

541	Palakkad	Ottappalam	Kadambazhippuram 1
542	Palakkad	Ottappalam	Kadambazhippuram 2
543	Palakkad	Ottappalam	Karimpuzha 1
544	Palakkad	Ottappalam	Karimpuzha 2
545	Palakkad	Ottappalam	Lakkidi peroor 1
546	Palakkad	Ottappalam	Lakkidi peroor 2
547	Palakkad	Ottappalam	Nellaya
548	Palakkad	Ottappalam	Pookkottukaavu
549	Palakkad	Ottappalam	Shornoor 1
550	Palakkad	Ottappalam	Shornoor 2
551	Palakkad	Ottappalam	Sreekrushnapuram 1
552	Palakkad	Ottappalam	Sreekrushnapuram 2
553	Palakkad	Ottappalam	Thrikkadeeri 1
554	Palakkad	Ottappalam	Thrikkadeeri 2
555	Palakkad	Ottappalam	Vellinezhi
556	Palakkad	Palakkad	Akathethara
557	Palakkad	Palakkad	Elappulli
558	Palakkad	Palakkad	Malampuzha 1
559	Palakkad	Palakkad	Mannoor
560	Palakkad	Palakkad	Pirayiri
561	Palakkad	Palakkad	Polppulli
562	Palakkad	Palakkad	Puthuppariyaaram
563	Palakkad	Pattambi	Aanakkara
564	Palakkad	Pattambi	Chalissery
565	Palakkad	Pattambi	Kappoor
566	Palakkad	Pattambi	Koppam
567	Palakkad	Pattambi	Kulukkallur
568	Palakkad	Pattambi	Muthumala
569	Palakkad	Pattambi	Nagalassery
570	Palakkad	Pattambi	Ongallur 1
571	Palakkad	Pattambi	Ongallur 2
572	Palakkad	Pattambi	Paruthoor
573	Palakkad	Pattambi	Pattambi
574	Palakkad	Pattambi	Pattithara
575	Palakkad	Pattambi	Thirumittakkodu 1
576	Palakkad	Pattambi	Thirumittakkodu 2
577	Palakkad	Pattambi	Thiruvegappura
578	Palakkad	Pattambi	Thrithala

579	Palakkad	Pattambi	Vallappuzha
580	Palakkad	Pattambi	Vilayoor
581	Malappuram	Nilambur	Chokkad
582	Malappuram	Nilambur	Karulayi
583	Malappuram	Nilambur	Akambadam
584	Malappuram	Nilambur	Vazhikkadav
585	Malappuram	Nilambur	Kurumbalangode
586	Malappuram	Nilambur	Kerala Estate
587	Malappuram	Nilambur	Amarambalam
588	Malappuram	Nilambur	Nilambur
589	Malappuram	Nilambur	Edakkara
590	Malappuram	Nilambur	Chungathara
591	Malappuram	Nilambur	Karuvarakkund
592	Malappuram	Nilambur	Mambad
593	Malappuram	Nilambur	Pullippadam
594	Malappuram	Nilambur	Porur
595	Malappuram	Nilambur	Tuvur
596	Malappuram	Nilambur	Wandoor
597	Malappuram	Nilambur	Vellayur
598	Malappuram	Nilambur	Kalikavu
599	Malappuram	Nilambur	Thiruvalli
600	Malappuram	Nilambur	Moothedam
601	Malappuram	Nilambur	Pothukallu
602	Malappuram	Ponnani	Ponnani Nagaram
603	Malappuram	Ponnani	Ezhavathiruthy
604	Malappuram	Ponnani	Kaladi
605	Malappuram	Ponnani	Tavanur
606	Malappuram	Ponnani	Maranchery
607	Malappuram	Ponnani	Vattomkulam
608	Malappuram	Ponnani	Perumpadap
609	Malappuram	Ponnani	Alancode
610	Malappuram	Ponnani	Nannammuk
611	Malappuram	Ponnani	Edappal
612	Malappuram	Ponnani	Veliyancode
613	Malappuram	Tirurangadi	Tirurangadi
614	Malappuram	Tirurangadi	Parappanagadi
615	Malappuram	Tirurangadi	Ariyalloor
616	Malappuram	Tirurangadi	Nannambra
617	Malappuram	Tirurangadi	Neduva
618	Malappuram	Tirurangadi	Ar Nagar
619	Malappuram	Tirurangadi	Moorniyoor

620	Malappuram	Tirurangadi	Thenhippalam
621	Malappuram	Tirurangadi	Peruvalloor
622	Malappuram	Tirurangadi	Kannanmangalam
623	Malappuram	Tirurangadi	Vengara
624	Malappuram	Tirurangadi	Oorakam
625	Malappuram	Tirurangadi	Parappoor
626	Malappuram	Tirurangadi	Edarikkode
627	Malappuram	Tirurangadi	Thennala
628	Malappuram	Tirurangadi	Vallikkunnu
629	Malappuram	Tirurangadi	Othukkungal
630	Malappuram	Tirur	Purathur
631	Malappuram	Tirur	Irimbiliyam
632	Malappuram	Tirur	Naduvattom
633	Malappuram	Tirur	Valavannoor
634	Malappuram	Tirur	Triprangode
635	Malappuram	Tirur	Kattipparuthi
636	Malappuram	Tirur	Trikkandiyur
637	Malappuram	Tirur	Kuttippuram
638	Malappuram	Tirur	Ozhur
639	Malappuram	Tirur	Niramaruthur
640	Malappuram	Tirur	Mangalam
641	Malappuram	Tirur	Vettom
642	Malappuram	Tirur	Tanalur
643	Malappuram	Tirur	Thalakkad
644	Malappuram	Tirur	Tirunnavaya
645	Malappuram	Tirur	Pariyapuram
646	Malappuram	Tirur	Tirur
647	Malappuram	Tirur	Perumanna
648	Malappuram	Tirur	Tanur
649	Malappuram	Tirur	Ananthavur
650	Malappuram	Tirur	Ponmundam
651	Malappuram	Tirur	Cheriyamundam
652	Malappuram	Tirur	Kottakkal
653	Malappuram	Tirur	Kalpakanjeri
654	Malappuram	Tirur	Ponmala
655	Malappuram	Tirur	Aathavanad
656	Malappuram	Tirur	Edayur
657	Malappuram	Tirur	Melmuri
658	Malappuram	Tirur	Kurumbathur
659	Malappuram	Tirur	Marakkara
660	Malappuram	Perinthalmanna	Alipparamb

661	Malappuram	Perinthalmanna	Elamkulam
662	Malappuram	Perinthalmanna	Melattur
663	Malappuram	Perinthalmanna	Perinthalmanna
664	Malappuram	Perinthalmanna	Arakkuparamb
665	Malappuram	Perinthalmanna	Karyavattom
666	Malappuram	Perinthalmanna	Edappatta
667	Malappuram	Perinthalmanna	Kodur
668	Malappuram	Perinthalmanna	Kuruva
669	Malappuram	Perinthalmanna	Koottilangadi
670	Malappuram	Perinthalmanna	Pulamanthol
671	Malappuram	Perinthalmanna	Kuruvambalam
672	Malappuram	Perinthalmanna	Valambur
673	Malappuram	Perinthalmanna	Thazhekkad
674	Malappuram	Perinthalmanna	Pathakkara
675	Malappuram	Perinthalmanna	Keezhattur
676	Malappuram	Perinthalmanna	Nenmini
677	Malappuram	Perinthalmanna	Vettathur
678	Malappuram	Perinthalmanna	Puzhakkattiri
679	Malappuram	Perinthalmanna	Angadippuram
680	Malappuram	Perinthalmanna	Anamangad
681	Malappuram	Perinthalmanna	Vadakkangara
682	Malappuram	Perinthalmanna	Mankada
683	Malappuram	Perinthalmanna	Moorkkanad
684	Malappuram	Kondotty	Morayur
685	Malappuram	Kondotty	Vazhayur
686	Malappuram	Kondotty	Vaazhakkad
687	Malappuram	Kondotty	Cherukav
688	Malappuram	Kondotty	Pulikkal
689	Malappuram	Kondotty	Kondotty
690	Malappuram	Kondotty	Nediyirup
691	Malappuram	Kondotty	Muthuvalloor
692	Malappuram	Kondotty	Cheekkode
693	Malappuram	Kondotty	Kuzhimanna
694	Malappuram	Kondotty	Pallikkal
695	Malappuram	Kondotty	Chelambra
696	Malappuram	Ernad	Manjeri
697	Malappuram	Ernad	Payyanad
698	Malappuram	Ernad	Narukara
699	Malappuram	Ernad	Triprangode
700	Malappuram	Ernad	Karakkunnu
701	Malappuram	Ernad	Edavanna

702	Malappuram	Ernad	Kavannoor
703	Malappuram	Ernad	Pulpatta
704	Malappuram	Ernad	Vettikkattiri
705	Malappuram	Ernad	Perakamanna
706	Malappuram	Ernad	Elankur
707	Malappuram	Ernad	Areecode
708	Malappuram	Ernad	Pandikkad
709	Malappuram	Ernad	Chembrasserri
710	Malappuram	Ernad	Malappuram
711	Malappuram	Ernad	Melmuri
712	Malappuram	Ernad	Pookkottoor
713	Malappuram	Ernad	Anakkayam
714	Malappuram	Ernad	Pandalloor
715	Malappuram	Ernad	Panakkad
716	Malappuram	Ernad	Urngattiri
717	Malappuram	Ernad	Keezhuparamb
718	Malappuram	Ernad	Vettilappara
719	Kozhikode	Kozhikode	Elathur
720	Kozhikode	Kozhikode	Olavanna
721	Kozhikode	Kozhikode	Kakkad
722	Kozhikode	Kozhikode	Kakkodi
723	Kozhikode	Kozhikode	Katcheri
724	Kozhikode	Kozhikode	Kadalundi
725	Kozhikode	Kozhikode	Karuvanthuruthi
726	Kozhikode	Kozhikode	Kasaba
727	Kozhikode	Kozhikode	Kunnamangalam
728	Kozhikode	Kozhikode	Kumaranallur
729	Kozhikode	Kozhikode	Kuruvattur
730	Kozhikode	Kozhikode	Kuttikattoor
731	Kozhikode	Kozhikode	Kodiyathur
732	Kozhikode	Kozhikode	Kottooli
733	Kozhikode	Kozhikode	Chathamangalam
734	Kozhikode	Kozhikode	Cheruvannur
735	Kozhikode	Kozhikode	Chelavoor
736	Kozhikode	Kozhikode	Chelannur
737	Kozhikode	Kozhikode	Chevayoor
738	Kozhikode	Kozhikode	Thalakupathur
739	Kozhikode	Kozhikode	Thazhekkodu
740	Kozhikode	Kozhikode	Nanminda
741	Kozhikode	Kozhikode	Neeleshwaram
742	Kozhikode	Kozhikode	Nellicode

743	Kozhikode	Kozhikode	Pantheerankavu
744	Kozhikode	Kozhikode	Panniyankara
745	Kozhikode	Kozhikode	Puthiyangadi
746	Kozhikode	Kozhikode	Poolakkode
747	Kozhikode	Kozhikode	Perumanna
748	Kozhikode	Kozhikode	Peruvayal
749	Kozhikode	Kozhikode	Feroke
750	Kozhikode	Kozhikode	Beyppore
751	Kozhikode	Kozhikode	Madavoor
752	Kozhikode	Kozhikode	Mavoor
753	Kozhikode	Kozhikode	Ramanattukara
754	Kozhikode	Kozhikode	Valayanadu
755	Kozhikode	Kozhikode	Vengeri
756	Kozhikode	Quilandy	Chemenjeri
757	Kozhikode	Quilandy	Chengottukavu
758	Kozhikode	Quilandy	Panthalayini
759	Kozhikode	Quilandy	Viyyur
760	Kozhikode	Quilandy	Moodadi
761	Kozhikode	Quilandy	Thikkodi
762	Kozhikode	Quilandy	Thurayoor
763	Kozhikode	Quilandy	Payyoli
764	Kozhikode	Quilandy	Keezhariyoor
765	Kozhikode	Quilandy	Arikkulam
766	Kozhikode	Quilandy	Kozhukkallur
767	Kozhikode	Quilandy	Iringal
768	Kozhikode	Quilandy	Changarothu
769	Kozhikode	Quilandy	Eravattur
770	Kozhikode	Quilandy	Paleri
771	Kozhikode	Quilandy	Koothali
772	Kozhikode	Quilandy	Cheruvannur
773	Kozhikode	Quilandy	Perambra
774	Kozhikode	Quilandy	Nochad
775	Kozhikode	Quilandy	Meppayur
776	Kozhikode	Quilandy	Chembanoda
777	Kozhikode	Quilandy	Menjanyam
778	Kozhikode	Quilandy	Chakittappara
779	Kozhikode	Quilandy	Avidanallur
780	Kozhikode	Quilandy	Kottur
781	Kozhikode	Quilandy	Kayanna
782	Kozhikode	Quilandy	Naduvannur
783	Kozhikode	Quilandy	Ulliyeri

784	Kozhikode	Quilandy	Atholi
785	Kozhikode	Quilandy	Balusseri
786	Kozhikode	Quilandy	Koorachund
787	Kozhikode	Vadakara	Thinoor
788	Kozhikode	Vadakara	Azhiyoor
789	Kozhikode	Vadakara	Onjiyam
790	Kozhikode	Vadakara	Chorod
791	Kozhikode	Vadakara	Eramala
792	Kozhikode	Vadakara	Vadakara
793	Kozhikode	Vadakara	Nadakkuthazha
794	Kozhikode	Vadakara	Maniyoor
795	Kozhikode	Vadakara	Kottappali
796	Kozhikode	Vadakara	Thiruvallur
797	Kozhikode	Vadakara	Palayad
798	Kozhikode	Vadakara	Aayanjeri
799	Kozhikode	Vadakara	Villyappalli
800	Kozhikode	Vadakara	Velam
801	Kozhikode	Vadakara	Edacheri
802	Kozhikode	Vadakara	Thuneri
803	Kozhikode	Vadakara	Chekkiyadu
804	Kozhikode	Vadakara	Vanimel
805	Kozhikode	Vadakara	Valayam
806	Kozhikode	Vadakara	Purameri
807	Kozhikode	Vadakara	Kavilumpara
808	Kozhikode	Vadakara	Maruthonkara
809	Kozhikode	Vadakara	Kuttiyadi
810	Kozhikode	Vadakara	Kayakkodi
811	Kozhikode	Vadakara	Kunnummal
812	Kozhikode	Vadakara	Nadapuram
813	Kozhikode	Vadakara	Narippatta
814	Kozhikode	Vadakara	Vilangad
815	Kozhikode	Thamarassery	Ingapuzha
816	Kozhikode	Thamarassery	Kanthalad
817	Kozhikode	Thamarassery	Raroth
818	Kozhikode	Thamarassery	Kinallur
819	Kozhikode	Thamarassery	Kizhakkoth
820	Kozhikode	Thamarassery	Kodancheri
821	Kozhikode	Thamarassery	Koduvalli
822	Kozhikode	Thamarassery	Koodaranji
823	Kozhikode	Thamarassery	Koodathai
824	Kozhikode	Thamarassery	Shivapuram

825	Kozhikode	Thamarassery	Thiruvambadi
826	Kozhikode	Thamarassery	Unnikulam
827	Kozhikode	Thamarassery	Vavad
828	Kozhikode	Thamarassery	Kattippara
829	Kozhikode	Thamarassery	Nellippoyil
830	Kozhikode	Thamarassery	Panangad
831	Kozhikode	Thamarassery	Puthuppadi
832	Kozhikode	Thamarassery	Puthur
833	Kozhikode	Thamarassery	Kedavoor
834	Wayanad	Mananthavady	Thirunelly
835	Wayanad	Mananthavady	Thavinhal
836	Wayanad	Mananthavady	Mananthavady
837	Wayanad	Mananthavady	Payyampalli
838	Wayanad	Mananthavady	Periya
839	Wayanad	Mananthavady	Valat
840	Wayanad	Mananthavady	Thondernad
841	Wayanad	Mananthavady	Kanjirangad
842	Wayanad	Mananthavady	Nalloornad
843	Wayanad	Mananthavady	Edavaka
844	Wayanad	Mananthavady	Cherukattur
845	Wayanad	Mananthavady	Panamaram
846	Wayanad	Mananthavady	Porunnanore
847	Wayanad	Mananthavady	Vellamunda
848	Wayanad	Mananthavady	Anjukunnu
849	Wayanad	Mananthavady	Thrissilery

850	Wayanad	Sulthan Bathery	Padichira
851	Wayanad	Sulthan Bathery	Pulpalli
852	Wayanad	Sulthan Bathery	Kidanganad
853	Wayanad	Sulthan Bathery	Irulam
854	Wayanad	Sulthan Bathery	Nadavayal
855	Wayanad	Sulthan Bathery	Poothadi
856	Wayanad	Sulthan Bathery	Purakkadi
857	Wayanad	Sulthan Bathery	Noolpuzha
858	Wayanad	Sulthan Bathery	Kuppadi
859	Wayanad	Sulthan Bathery	Krishnagiri
860	Wayanad	Sulthan Bathery	Sulthanbathery
861	Wayanad	Sulthan Bathery	Nenmeni
862	Wayanad	Sulthan Bathery	Ambalavayal
863	Wayanad	Sulthan Bathery	Cheeral
864	Wayanad	Sulthan Bathery	Thomattuchal
865	Wayanad	Vythiri	Kaniambetta
866	Wayanad	Vythiri	Kuppadithara
867	Wayanad	Vythiri	Padinharethara
868	Wayanad	Vythiri	Muttill North
869	Wayanad	Vythiri	Kavumannam
870	Wayanad	Vythiri	Thariyode
871	Wayanad	Vythiri	Vengappally
872	Wayanad	Vythiri	Kalpetta
873	Wayanad	Vythiri	Thrikkaipatta (Part)
874	Wayanad	Vythiri	Pozhuthana
875	Wayanad	Vythiri	Muppainad
876	Wayanad	Vythiri	Kottappadi (Part)

877	Wayanad	Vythiri	Chundale
878	Wayanad	Vythiri	Kunnathidavaka
879	Wayanad	Vythiri	Kottathara
880	Wayanad	Vythiri	Muttill South
881	Wayanad	Vythiri	Achooranam
882	Wayanad	Vythiri	Vellarmala
883	Kannur	Iritty	Vayathur
884	Kannur	Iritty	Nuchiyad
885	Kannur	Iritty	Ayyankunnu
886	Kannur	Iritty	Vilamana
887	Kannur	Iritty	Kalliad
888	Kannur	Iritty	Padiyoor
889	Kannur	Iritty	Aralam
890	Kannur	Iritty	Payam
891	Kannur	Iritty	Keezhur
892	Kannur	Iritty	Chavassery
893	Kannur	Iritty	Muzhakkunnu
894	Kannur	Iritty	Thillankeri
895	Kannur	Iritty	Kottiyoor
896	Kannur	Iritty	Kanichar
897	Kannur	Iritty	Kelakam
898	Kannur	Iritty	Manathana
899	Kannur	Iritty	Vellarveli
900	Kannur	Iritty	Kolari
901	Kannur	Iritty	Pazhasi
902	Kannur	Kannur	Cherukunnu
903	Kannur	Kannur	Kannapuram
904	Kannur	Kannur	Mattool
905	Kannur	Kannur	Kalliasseri
906	Kannur	Kannur	Pappinisseri
907	Kannur	Kannur	Narath
908	Kannur	Kannur	Azhikode North
909	Kannur	Kannur	Munderi
910	Kannur	Kannur	Kannadiparamba
911	Kannur	Kannur	Chirakkal
912	Kannur	Kannur	Valapattanam
913	Kannur	Kannur	Valiyannur
914	Kannur	Kannur	Azhikode South
915	Kannur	Kannur	Puzhathi
916	Kannur	Kannur	Ancharakkandi
917	Kannur	Kannur	Pallikunnu

918	Kannur	Kannur	Chelora
919	Kannur	Kannur	Elayavur
920	Kannur	Kannur	Kannur-II
921	Kannur	Kannur	Kannur-I
922	Kannur	Kannur	Makreri
923	Kannur	Kannur	Mavilayi
924	Kannur	Kannur	Kadambur
925	Kannur	Kannur	Muzhappilangad
926	Kannur	Payyannur	Pulingom
927	Kannur	Payyannur	Thirumeni
928	Kannur	Payyannur	Eramam
929	Kannur	Payyannur	Vellur
930	Kannur	Payyannur	Panapuzha
931	Kannur	Payyannur	Korome
932	Kannur	Payyannur	Kadannappalli
933	Kannur	Payyannur	Kunhimangalam
934	Kannur	Payyannur	Cheruthazham
935	Kannur	Payyannur	Panniyoor
936	Kannur	Payyannur	Ramanthali
937	Kannur	Payyannur	Ezhome
938	Kannur	Payyannur	Madayi
939	Kannur	Payyannur	Kankol
940	Kannur	Taliparamba	Alakode
941	Kannur	Taliparamba	Thimiri
942	Kannur	Taliparamba	Vellad
943	Kannur	Taliparamba	Naduvil
944	Kannur	Taliparamba	Eruvassery
945	Kannur	Taliparamba	Kooveri
946	Kannur	Taliparamba	Payyavoor
947	Kannur	Taliparamba	Pariyaram
948	Kannur	Taliparamba	Chuzhali
949	Kannur	Taliparamba	Nediyanga
950	Kannur	Taliparamba	Kuttiyeri
951	Kannur	Taliparamba	Sreekandapuram
952	Kannur	Taliparamba	Taliparamba
953	Kannur	Taliparamba	Chengalai
954	Kannur	Taliparamba	Kurumathur
955	Kannur	Taliparamba	Pattuvam
956	Kannur	Taliparamba	Malapattam
957	Kannur	Taliparamba	Kayaralam
958	Kannur	Taliparamba	Andhur

959	Kannur	Taliparamba	Irikkur
960	Kannur	Taliparamba	Morazha
961	Kannur	Taliparamba	Kuttiattoor
962	Kannur	Taliparamba	Mayyil
963	Kannur	Taliparamba	Kolacheri
964	Kannur	Taliparamba	Cheleri
965	Kannur	Taliparamba	Maniyoor
966	Kannur	Thalassery	Pattannur
967	Kannur	Thalassery	Mokeri
968	Kannur	Thalassery	Keezhallur
969	Kannur	Thalassery	Sivapuram
970	Kannur	Thalassery	Pathiriyad
971	Kannur	Thalassery	Dharmadom
972	Kannur	Thalassery	Kadirur
973	Kannur	Thalassery	Thiruvangad
974	Kannur	Thalassery	Kodiyeri
975	Kannur	Thalassery	Peringathur
976	Kannur	Thalassery	Chokli
977	Kannur	Thalassery	Peringalam
978	Kasargod	Manjeswaram	Bambrana
979	Kasargod	Manjeswaram	Ujar Ulavar
980	Kasargod	Manjeswaram	Koipady
981	Kasargod	Manjeswaram	Mogral
982	Kasargod	Manjeswaram	Uppala
983	Kasargod	Manjeswaram	Padre
984	Kasargod	Manjeswaram	Kannur
985	Kasargod	Manjeswaram	Vorkady
986	Kasargod	Manjeswaram	Pathur
987	Kasargod	Manjeswaram	Badoor
988	Kasargod	Kasaragod	Kasaragod
989	Kasargod	Kasaragod	Adkkathubayal
990	Kasargod	Kasaragod	Thekkil
991	Kasargod	Kasaragod	Perumbla
992	Kasargod	Kasaragod	Adoor
993	Kasargod	Kasaragod	Muliyar
994	Kasargod	Kasaragod	Kalnad
995	Kasargod	Kasaragod	Chemmanad
996	Kasargod	Kasaragod	Kudlu
997	Kasargod	Kasaragod	Puthur
998	Kasargod	Kasaragod	Thalangara
999	Kasargod	Kasaragod	Madhur

1000	Kasargod	Kasaragod	Patla
1001	Kasargod	Kasaragod	Munnad
1002	Kasargod	Kasaragod	Adhur
1003	Kasargod	Kasaragod	Nettanige
1004	Kasargod	Kasaragod	Chengala
1005	Kasargod	Hosdurg	Ajanur
1006	Kasargod	Hosdurg	Cheemeni
1007	Kasargod	Hosdurg	Cheruvathur
1008	Kasargod	Hosdurg	Kanhangad
1009	Kasargod	Hosdurg	Hosdurg
1010	Kasargod	Hosdurg	Kayyur
1011	Kasargod	Hosdurg	Klaikode
1012	Kasargod	Hosdurg	Thimiri
1013	Kasargod	Hosdurg	Madikai
1014	Kasargod	Hosdurg	Nileshwar
1015	Kasargod	Hosdurg	North Thrikkaripur
1016	Kasargod	Hosdurg	Padanne
1017	Kasargod	Hosdurg	Kottikulam
1018	Kasargod	Hosdurg	Perole
1019	Kasargod	Hosdurg	Pilicode
1020	Kasargod	Hosdurg	Puthukai
1021	Kasargod	Hosdurg	Pullur
1022	Kasargod	Hosdurg	South Thrikkaripur
1023	Kasargod	Hosdurg	Valiyaparampa
1024	Kasargod	Vellarikkundu	Balal
1025	Kasargod	Vellarikkundu	Belur
1026	Kasargod	Vellarikkundu	Bheemanady
1027	Kasargod	Vellarikkundu	Chittarikkal
1028	Kasargod	Vellarikkundu	Kallar
1029	Kasargod	Vellarikkundu	Karindalam
1030	Kasargod	Vellarikkundu	Cheemeni-II
1031	Kasargod	Vellarikkundu	Kodothu
1032	Kasargod	Vellarikkundu	Maloth
1033	Kasargod	Vellarikkundu	Palavayal
1034	Kasargod	Vellarikkundu	Panathady
1035	Kasargod	Vellarikkundu	Parappa
1036	Kasargod	Vellarikkundu	Thayannur
1037	Kasargod	Vellarikkundu	West Eleri
1038	Kasargod	Vellarikkundu	Kinanur



Landslide Site in Puthumala, Wayanad





Memorandum | Kerala
Floods & Landslides 2019

Submitted by

State Relief Commissioner
(Principal Secretary, Disaster Management)
Government of Kerala

16-9-2019