

# Disaster Management Inventory of Infrastructure for Emergency Management



29-06-2020



# Infrastructure

Updated as on 29-6-2020

<b>A) Health Infrastructure with beds</b>	<b>No. of Institutions</b>	<b>Capacity</b>
Government Hospitals	405	45,839
Sree Chithra (SCTIMST)	1	250
Homeopathy	34	985
Indian Systems of Medicine	130	3515
Private Hospitals	676	82,081
<b>Total</b>	<b>1,246</b>	<b>1,32,670</b>
<b>B) Facilities with Beds</b>	<b>No. of Institutions</b>	<b>Capacity</b>
Hostels	1045	1,09,968
Hotels	2,523	44,804
Lodges	2,175	30,821
Resorts	721	10,232
Ayur Centres	128	1694
<b>Total</b>	<b>6,592</b>	<b>1,97,519</b>
<b>C) Facilities without Beds</b>		<b>Rooms</b>
Schools	11,937	1,69,646
ITI Institutions	57	220
Auditoriums	1,505	
<b>Total</b>	<b>13,499</b>	<b>1,69,866</b>
<b>GRAND TOTAL (A + B + C)</b>	<b>21,337</b>	<b>5,00,005</b>



# Beds, ICUs and Ventilators

As on 29-6-2020

Section of Hospital	Bedded Institutions	Total beds	Total ICU beds	Total ventilators	COVID beds	COVID ICU beds	COVID Ventilators
COVID hospital	29	20250	1519	785	8370	803	483
Non-Covid Hospital - DME	1	1152	38	51	100	10	6
Non-Covid Hospital - DHS	375	24437	250	131	1213	77	43
<b>Total Government</b>	405	45839	1807	967	9683	890	532
Private Hospitals	676	82081	6079	1579	0	0	0
Others	165	4750	72	64	0	0	0
<b>Grand Total</b>	1246	132670	7958	2610	9683	890	532



# Beds, ICUs and Ventilators

As on 29-6-2020

District	Bedded Institutions	COVID hospitals	Total beds	Total ICU beds	Total ventilators	COVID beds	COVID ICU beds	COVID Ventilators
Thiruvananthapuram	43	2	8335	436	204	1160	283	154
Kollam	26	2	3491	100	61	1480	38	35
Pathanamthitta	19	2	1704	29	27	371	25	16
Alappuzha	32	2	3270	134	95	879	114	12
Kottayam	26	2	3697	165	137	452	32	111
Idukki	35	2	1385	51	37	489	51	34
Ernakulam	48	2	3633	128	60	586	55	34
Thrissur	36	2	4390	114	59	583	86	14
Palakkad	27	1	1546	44	23	238	30	4
Malappuram	31	2	2702	69	36	641	36	34
Kozhikode	25	2	5145	233	104	1219	12	15
Wayanad	22	1	1308	38	18	356	31	18
Kannur	41	4	4257	243	76	897	75	29
Kasaragod	13	3	976	23	30	332	22	22
<b>Total</b>	<b>405</b>	<b>29</b>	<b>45839</b>	<b>1807</b>	<b>967</b>	<b>9683</b>	<b>890</b>	<b>532</b>



# Hospitals with beds - Private

Districts	Health Care Facilities	Beds	ICU Bed	Ventilators
Tvm	62	8611	797	192
Kol	30	2376	199	42
Ptn	26	4532	498	90
Alp	23	1746	99	17
Ktm	26	4018	375	80
Idu	7	2021	0	36
Ekm	108	16675	1151	360
Tsr	80	9084	1017	192
Pkd	59	9367	472	106
Mal	88	7868	504	127
Koz	64	8663	538	251
Way	28	1842	117	22
Kan	44	3872	224	55
Kas	31	1406	88	9
<b>Total</b>	<b>676</b>	<b>82,081</b>	<b>6079</b>	<b>1579</b>



# Covid-19 Specific Infrastructure – Hospitals

As on 29-6-2020

District	Institutions	Beds		ICU Beds		Ventilators	
		Total	COVID	Total	COVID	Total	COVID
Thiruvananthapuram	2	3522	1008	394	273	144	148
Kollam	2	1287	1287	47	22	39	22
Pathanamthitta	2	648	323	12	12	17	14
Alappuzha	2	1191	794	129	114	82	12
Kottayam	2	2176	350	162	32	132	110
Idukki	2	350	350	17	17	19	19
Ernakulam	2	750	450	50	50	37	31
Thrissur	2	1676	329	110	82	48	11
Palakkad	1	544	200	40	30	20	3
Malappuram	2	775	565	51	36	34	33
Kozhikode	2	3415	1219	215	12	98	15
Wayanad	1	500	316	26	26	14	14
Kannur	4	2707	847	243	75	71	29
Kasaragod	3	709	332	23	22	30	22
<b>Total</b>	<b>29</b>	<b>20250</b>	<b>8370</b>	<b>1519</b>	<b>803</b>	<b>785</b>	<b>483</b>

# Covid-19 Firstline Treatment Centre

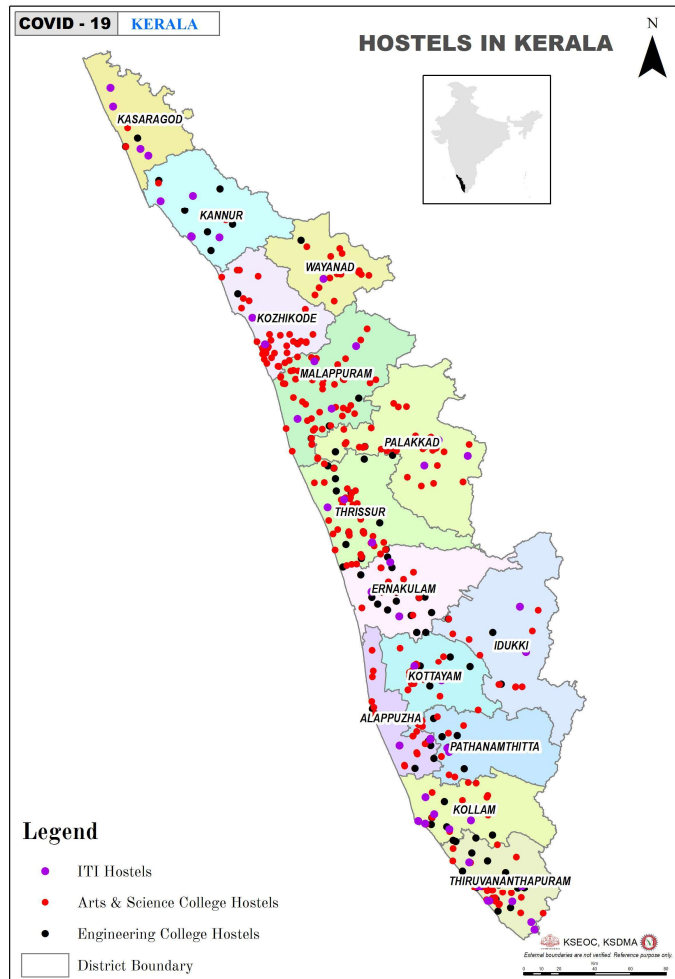
As on 29-6-2020



District	Number of CFLTCs	CFLTC beds available	Total beds occupied (positives + awaiting results)
Thiruvananthapuram	2	250	26
Kollam	2	130	0
Pathanamthitta	3	169	95
Kottayam	2	220	0
Alappuzha	2	320	30
Idukki	2	150	0
Ernakulam	2	300	120
Thrissur	2	150	67
Palakkad	1	100	49
Malappuram	3	167	49
Kozhikode	2	575	44
Wayanad	1	30	0
Kannur	4	518	0
Kasargod	3	204	52
<b>Total</b>	<b>31</b>	<b>3283</b>	<b>532</b>



# Hostels

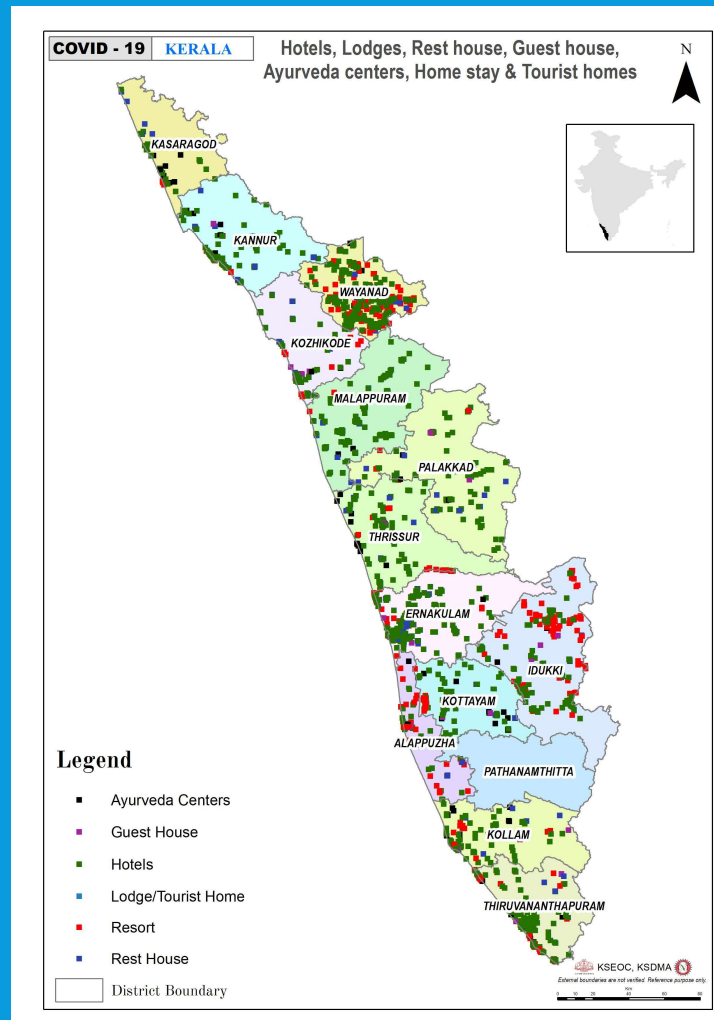


Sl. No	District	No. of Insitutions	Total Capacity
1	Thiruvananthapuram	123	14494
2	Kollam	76	7706
3	Pathanamthitta	44	3414
4	Alappuzha	41	3960
5	Kottayam	48	5941
6	Idukki	58	4921
7	Ernakulam	100	11500
8	Thrissur	95	14849
9	Palakkad	114	8057
10	Malappuram	98	9523
11	Kozhikode	92	13511
12	Wayanad	46	4049
13	Kannur	85	6387
14	Kasaragod	25	1656
	<b>Total</b>	<b>1045</b>	<b>1,09,968</b>





# Hotels, Lodges, Resorts, Ayur Centres



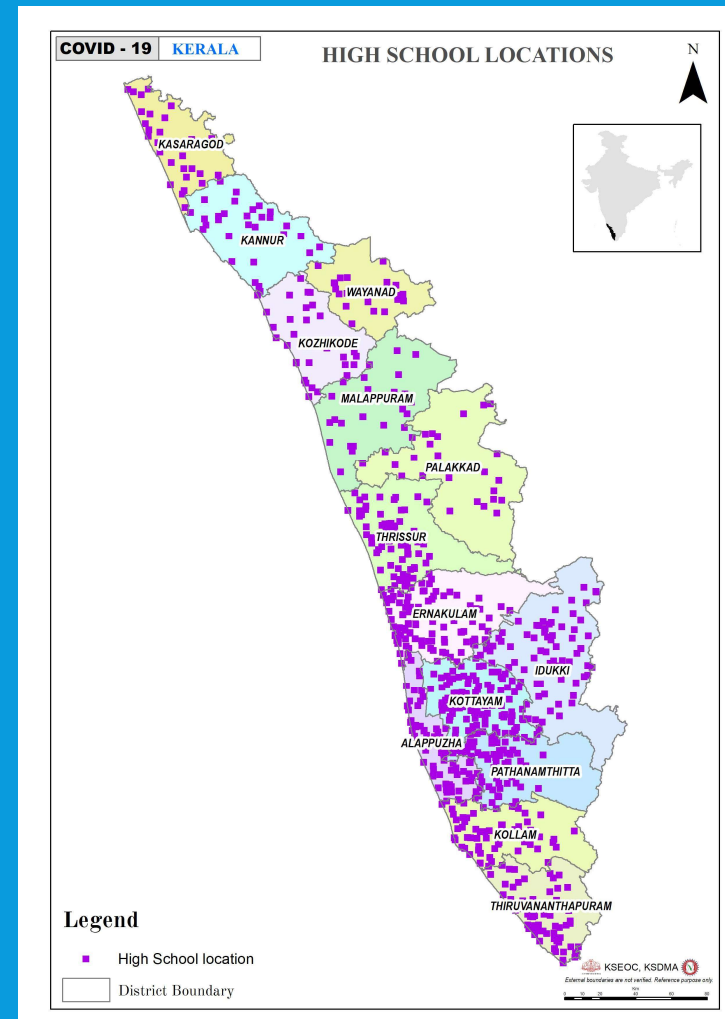
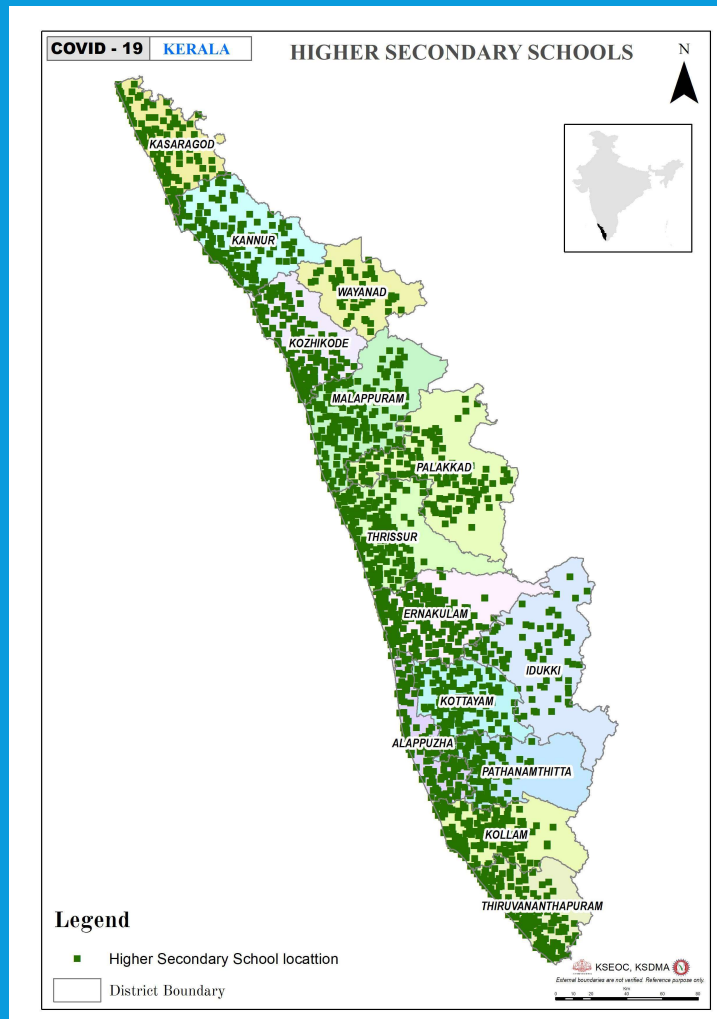


# Hotels, Lodges, Resorts, Ayur Centres

Sl. No	District	Hotels		Lodges/Tourist Homes/Others		Resorts		Ayur centres		Total	
		Units	Rooms	Units	Rooms	Units	Rooms	Units	Rooms	Units	Rooms
1	<b>Thiruvananthapuram</b>	332	6662	294	4540	189	3476	26	342	<b>841</b>	<b>15020</b>
2	<b>Kollam</b>	89	1458	108	1553	12	132	11	109	<b>220</b>	<b>3252</b>
3	<b>Pathanamthitta</b>	59	1013	44	794	0	0	16	145	<b>119</b>	<b>1952</b>
4	<b>Alappuzha</b>	74	1079	86	783	47	364	5	47	<b>212</b>	<b>2273</b>
5	<b>Kottayam</b>	65	1099	62	871	25	683	9	51	<b>161</b>	<b>2704</b>
6	<b>Idukki</b>	290	4932	323	2948	193	2942	3	39	<b>809</b>	<b>10861</b>
7	<b>Ernakulam</b>	449	12602	458	4402	37	380	5	39	<b>949</b>	<b>17423</b>
8	<b>Thrissur</b>	201	4671	191	2996	26	480	15	289	<b>433</b>	<b>8436</b>
9	<b>Palakkad</b>	159	2109	95	1416	4	16	5	56	<b>263</b>	<b>3597</b>
10	<b>Malappuram</b>	245	3141	17	158	3	136	4	193	<b>269</b>	<b>3628</b>
11	<b>Kozhikode</b>	115	3547	124	2584	9	113	4	41	<b>252</b>	<b>6285</b>
12	<b>Wayanad</b>	364	3644	122	1307	85	626	7	77	<b>578</b>	<b>5654</b>
13	<b>Kannur</b>	156	2222	119	1969	12	93	8	111	<b>295</b>	<b>4395</b>
14	<b>Kasaragod</b>	46	852	47	1071	5	85	8	138	<b>106</b>	<b>2146</b>
<b>Total</b>		<b>2644</b>	<b>49031</b>	<b>2090</b>	<b>27392</b>	<b>647</b>	<b>9526</b>	<b>126</b>	<b>1677</b>	<b>5507</b>	<b>87626</b>

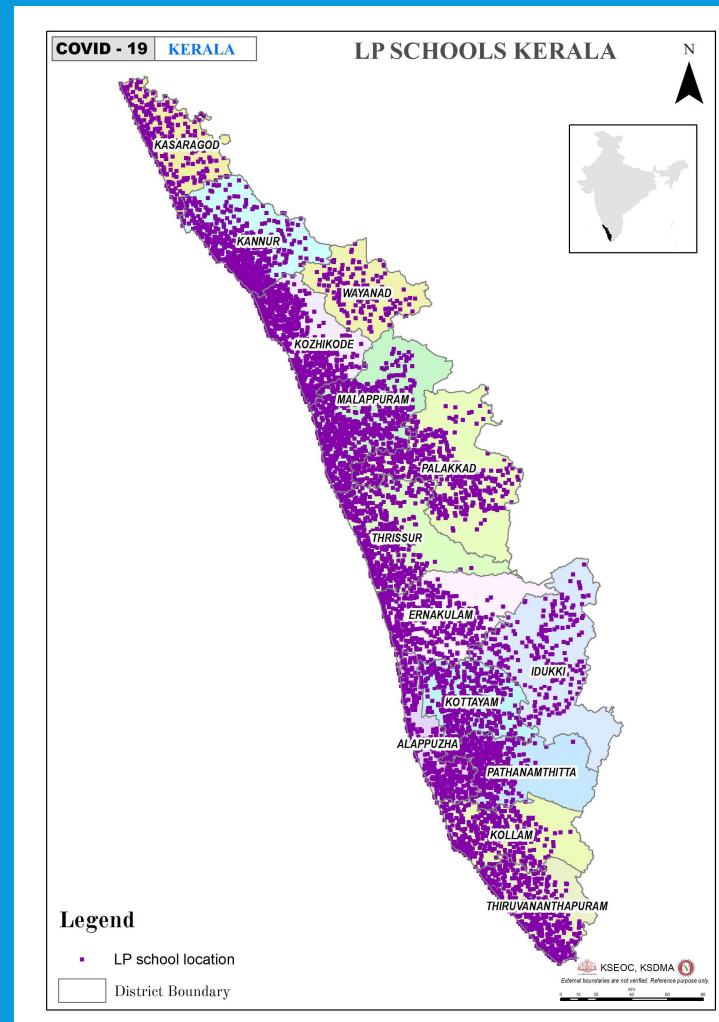
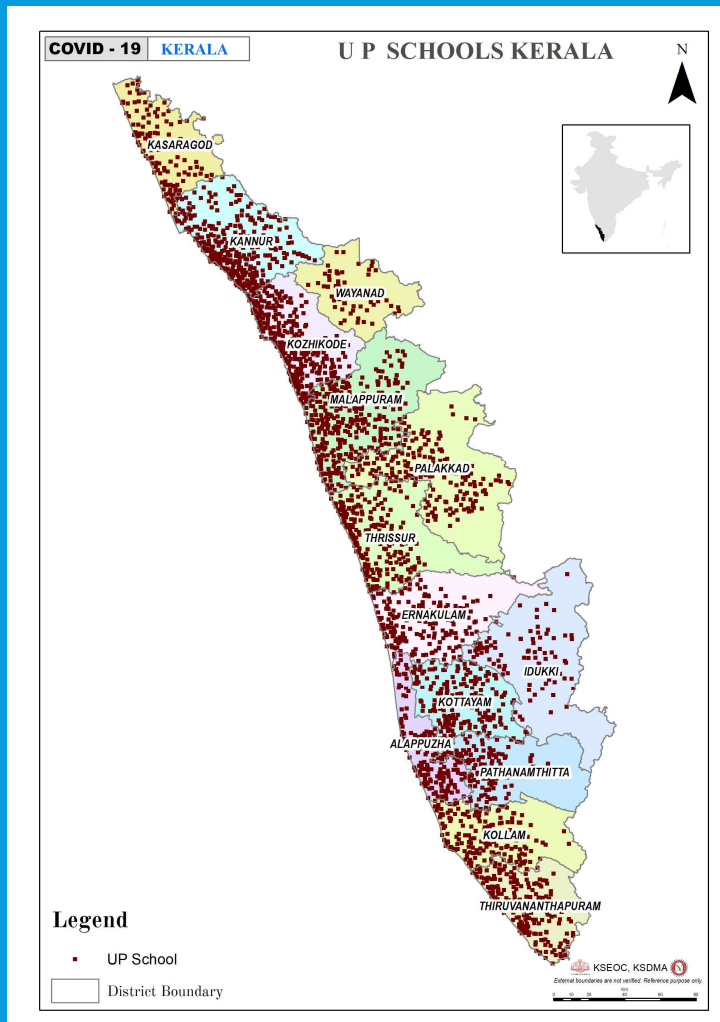


# Higher Secondary & High Schools





# UP and LP Schools



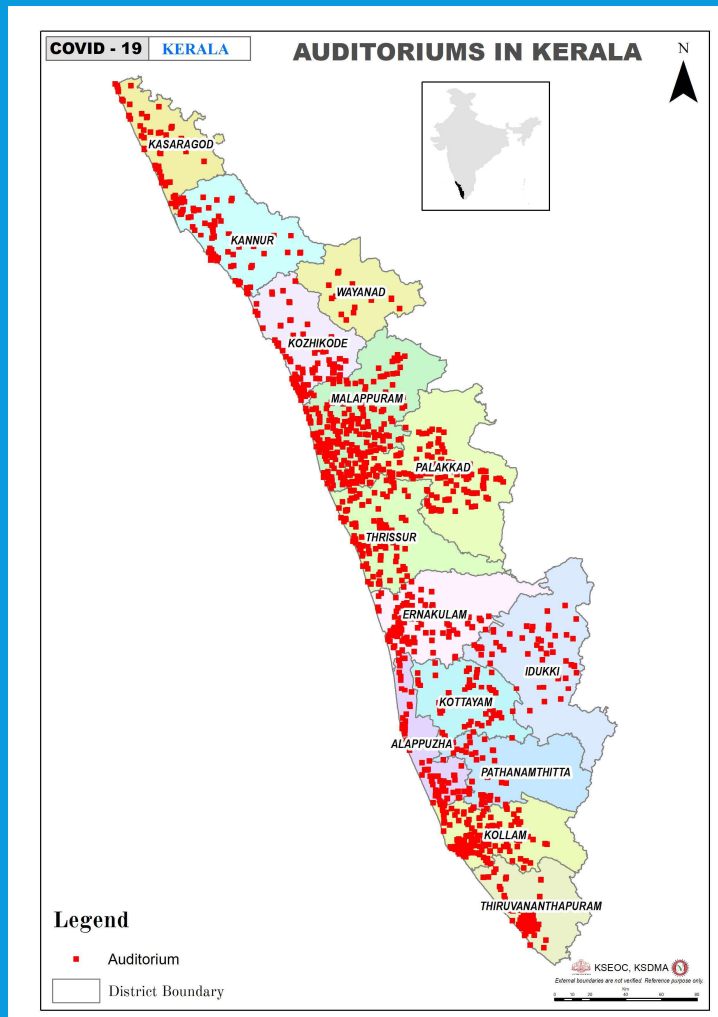


# Schools

District	HS		HSS		LP		UP		Total Units	Total No of Class Rooms
	Units	Class Rooms	Units	Class Rooms	Units	Class Rooms	Units	Class Rooms		
Tvm	69	1502	158	5281	479	3915	197	2721	903	13419
Klm	65	1528	150	4906	454	3485	198	2630	867	12549
Ptn	68	969	96	2156	395	2001	129	1049	688	6175
Alp	76	1604	118	3597	386	2756	147	1784	727	9741
Ktm	111	1647	131	2909	428	2614	194	1911	864	9081
Idu	77	1062	78	1672	227	1529	86	985	468	5248
Ekm	104	2100	177	5330	432	3435	189	2323	902	13188
Tsr	75	2027	164	5618	486	4358	220	3509	945	15512
Pkd	34	807	137	5588	545	4270	203	4178	919	14843
Mal	29	963	175	8818	850	8011	325	7904	1379	25696
Koz	34	731	150	5741	705	4692	309	5560	1198	16724
Way	28	537	61	1859	138	930	62	1226	289	4552
Kan	31	597	148	5265	721	4337	346	5176	1246	15375
Kas	33	564	100	3229	279	1772	130	1978	542	7543
<b>Total</b>	<b>834</b>	<b>16638</b>	<b>1843</b>	<b>61969</b>	<b>6525</b>	<b>48105</b>	<b>2735</b>	<b>42934</b>	<b>11,937</b>	<b>1,69,646</b>



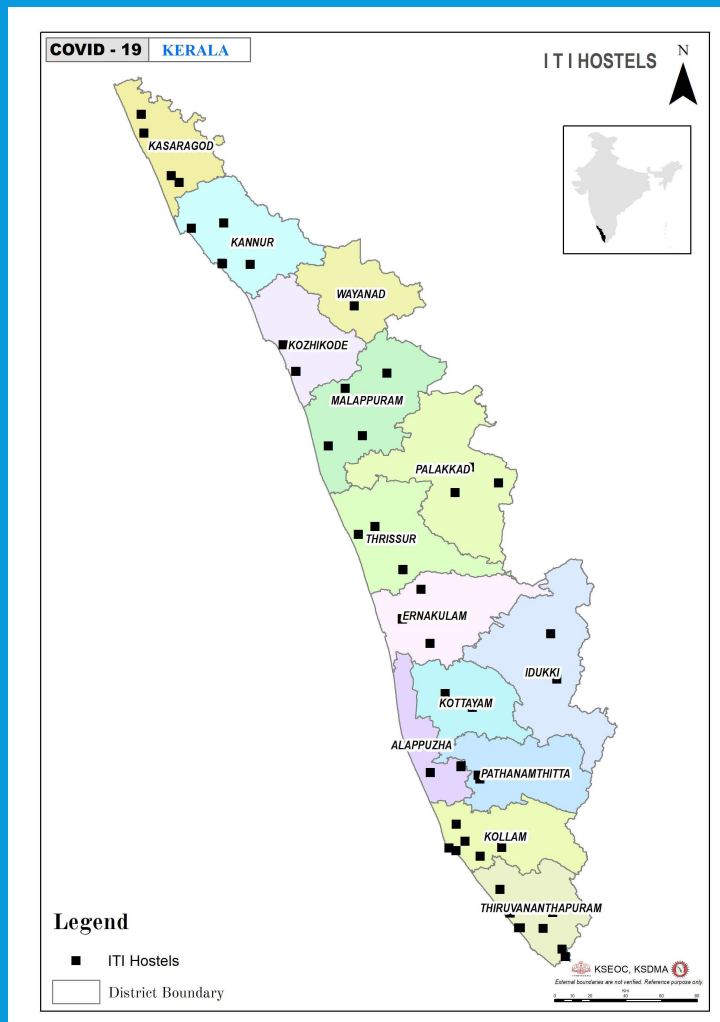
# Additional Facilities – Auditorium



District	No: of Auditoriums
Thiruvananthapuram	118
Kollam	146
Pathanamthitta	50
Alppuzha	79
Kottayam	81
Idukki	60
Ernakulam	114
Thrissur	114
Palakkad	196
Malappuram	243
Kozhikode	124
Wayanad	15
Kannur	102
Kasaragod	63
<b>Total</b>	<b>1505</b>



# Additional Facilities – ITI institutions



Sl. No	District	Total No of Institutions	Rooms
1	Tvm	9	35
2	Klm	6	16
3	Ptn	2	4
4	Alp	3	17
5	Ktm	2	9
6	Idu	2	12
7	Ekm	5	22
8	Tsr	5	16
9	Pkd	4	15
10	Mal	4	15
11	Koz	4	20
12	Way	1	3
13	Kan	5	19
14	Kas	5	17
	<b>Total</b>	<b>57</b>	<b>220</b>